

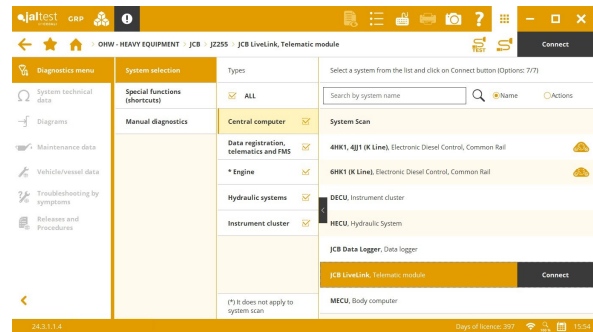
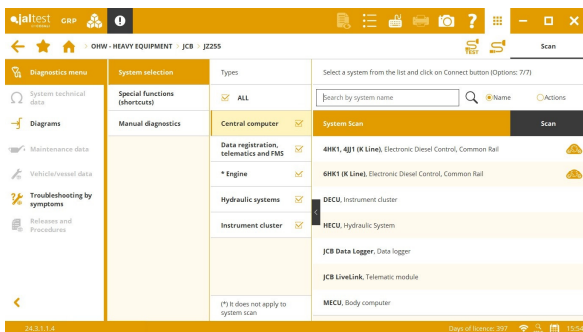


INNOVATIONS 24.3

SYSTEM SCAN AND CONNECTION

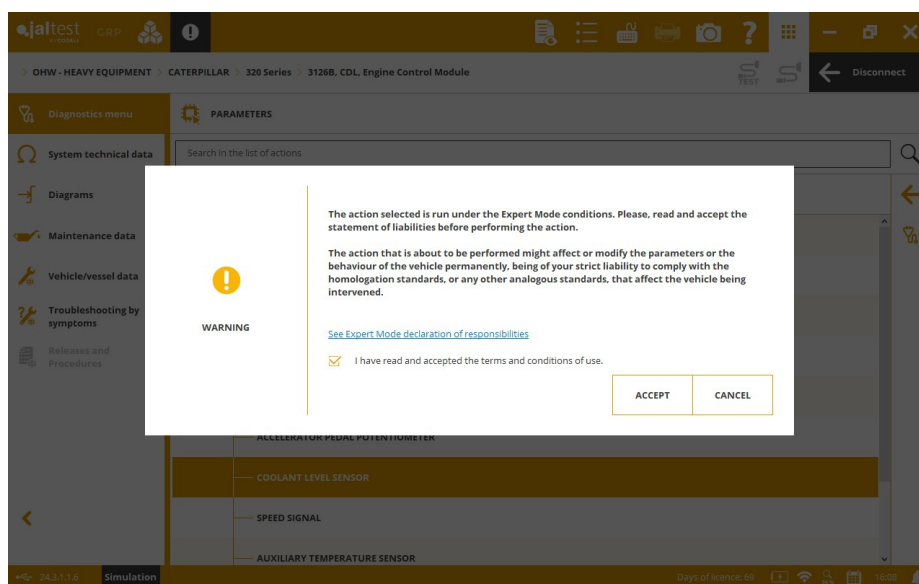
In this version, the location of the system scan functionality has been changed, it is now pre-selected by default in the list of systems when accessing a model. It is possible to use the system type selection filters to perform the system scan of only those systems identified as main systems.

In addition, from this version, the button to connect to a system appears together with the selected system.

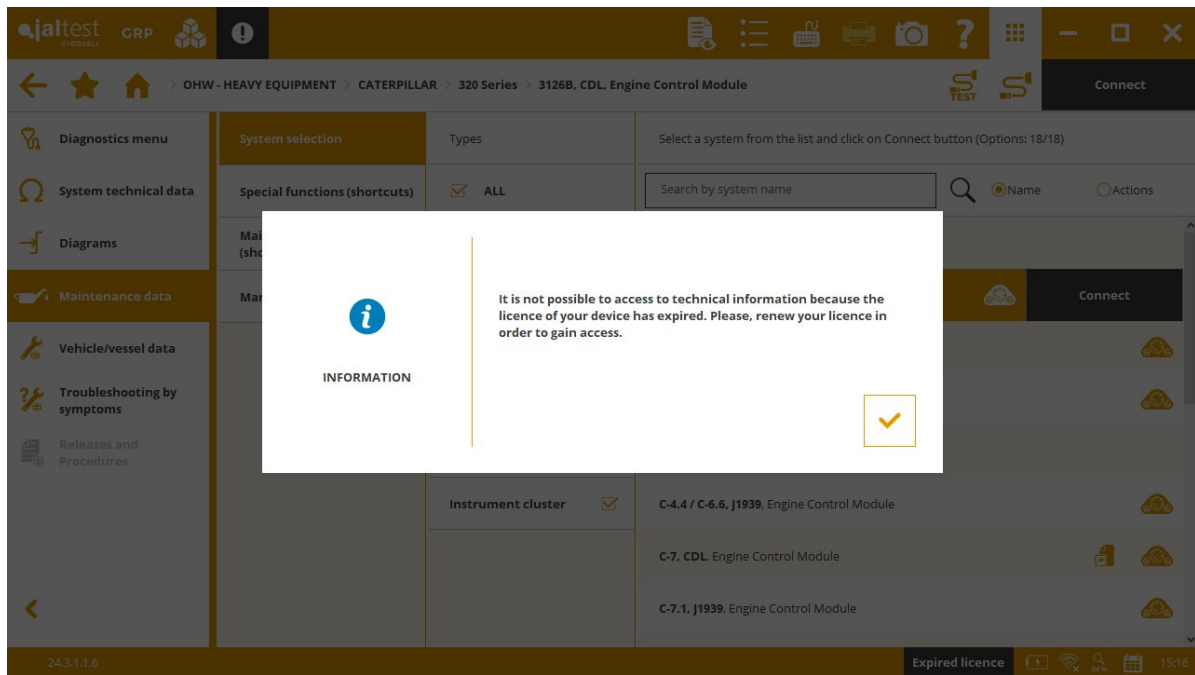


OTHER FUNCTIONALITIES

- Removal of expert mode management by code. Therefore, from this version, there will be no code to enable the expert mode, it is only necessary to accept the terms and conditions of use. Jaltest Diagnostics will continue to inform the users in all advanced actions under expert mode so that they can take the necessary precautions. On the other hand, for enterprises where expert mode code would be useful, the creation of user roles from GRP is recommended in order to have different levels of access.



- Improved representation of measurements in diagnostics reports.
- To avoid excessive number of clicks when accessing a system, connection instructions are no longer displayed. If more information is required, it is necessary to go to the connection information button to access connection instructions on which cable to use.
- The technical information buttons are not disabled when the licence expires, however, access is not allowed.



- Improved management of licences and subscribed products. From this moment on, the Jaltest licence menu displays a breakdown of the status and expiry date of each subscribed module.

Take into account that this document is only a summary of the most relevant information of this new version. For further information, please visit Jaltest Report.

BRANDS AND MODELS

OHW - HEAVY EQUIPMENT

The number of models in **DEVELON, DITCH WITCH, GROVE, JCB** and **KOMATSU** brands has been expanded.

JOHN DEERE

21 new models.

OHW - COMPACT EQUIPMENT

The number of models in **CASE CE, DEVELON, JCB, JOHN DEERE, KOMATSU, MENZI MUCK, MST** and **XCMG** brands has been expanded.

MANITOU

15 new models.

STATIONARY ENGINE

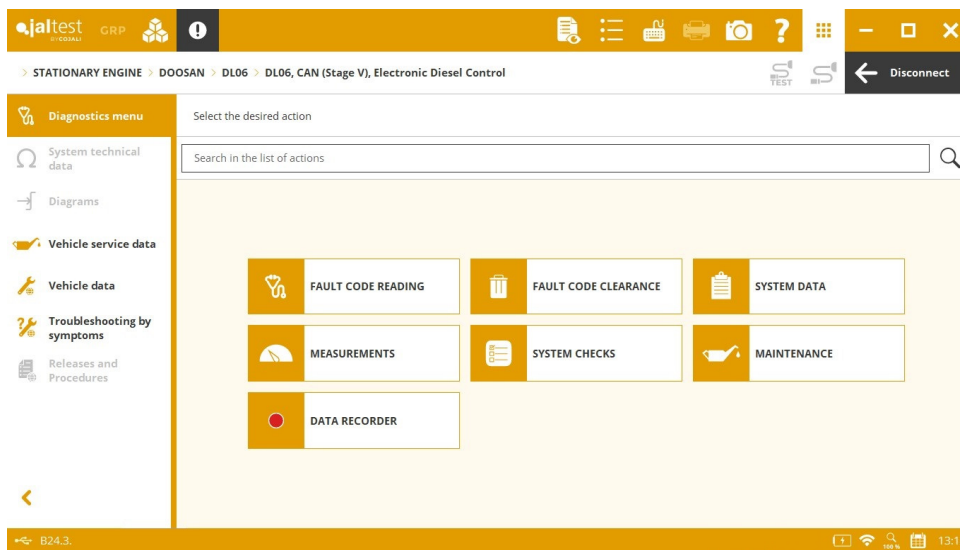
New models in **CUMMINS** and **DOOSAN** brands.

MULTI-PURPOSE VEHICLE

This version includes **VITRA** brand.

DIAGNOSTICS AND SYSTEMS

It is important to note the development of the **DL06/DL08** engine control system in **DOOSAN STAGE V** engines. This system is available for STATIONARY ENGINE and other brands such as **DEVELON**.



OHW - HEAVY EQUIPMENT

AMMANN

EMR5 EDC MD1 (on SAE J1939) engine control system, advanced diagnostics functions in the maintenance menu.

CASE CE

New wiring diagram configurations in **6UZI** (on SAE J1939) engine control systems in **CX400C** and **CX500ME Series** models.

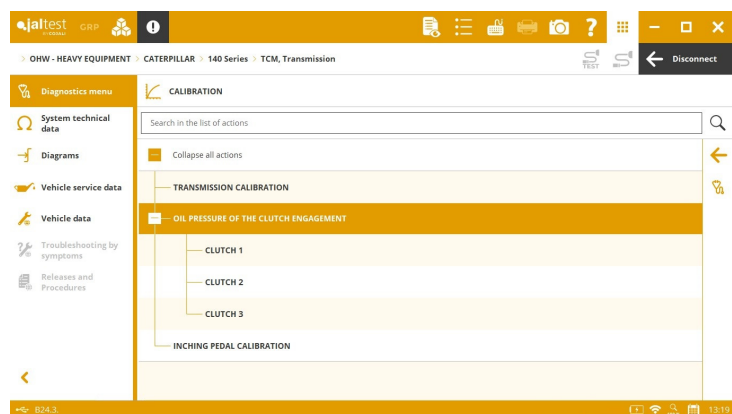
CATERPILLAR

TCM (on CDL) transmission in **100/20/10 Series** models, clutch pressure check and calibrations.

New wiring diagram configurations in **TCM** (on CDL), **EHCUI** (on CDL) and **SCR / DEF** systems.

HAMM

EMR5 EDC MD1 engine control system, advanced diagnostics functions for the maintenance service of the exhaust gas aftertreatment system.



JCB

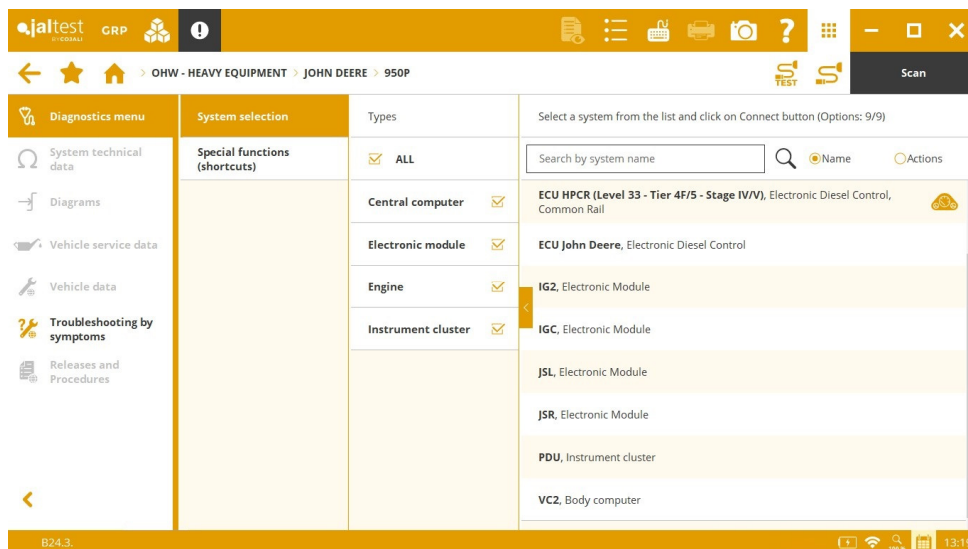
⊕ **IC** (on SAE J1939) instrument cluster for wheel loaders.

DieselMax 448, Stage V (on SAE J1939) engine control system, activations, system checks, parameter configuration and maintenance reset.

JOHN DEERE

⊕ **IG2** system for the **L Series** dozer.

⊕ **IGC, JSL, JSR, PDU** and **VC2** systems for **L Series** and **P Series** dozers.



VOLVO CE

New wiring diagram configurations in the **EDC** system in the **A Series (XY D)** model.

OHW - COMPACT EQUIPMENT

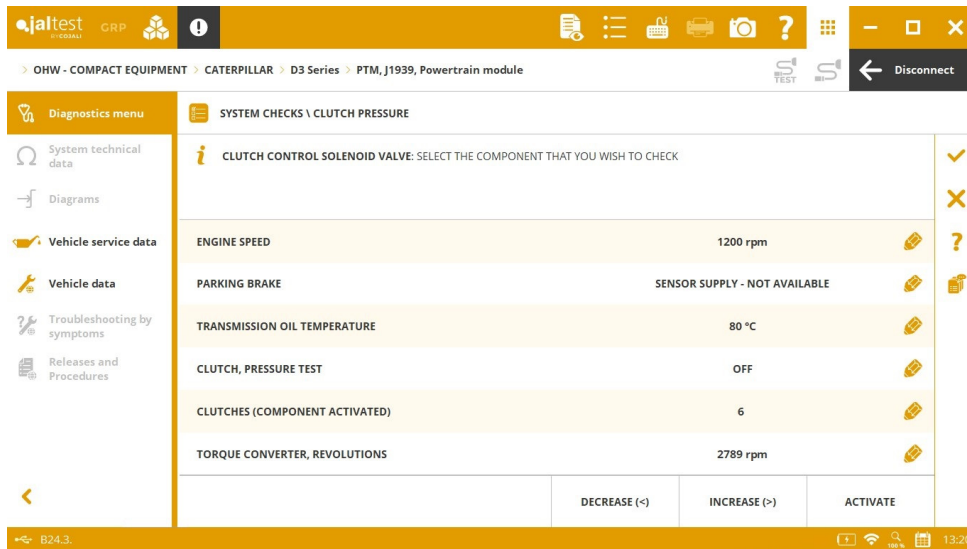
Among many new functionalities, it is important to note the development of advanced diagnostics functions in the **EDC YDECO** engine control system from **YANMAR**, such as operation data, activations and system checks.

CATERPILLAR

C-4.4 / C-6.6 (on SAE J1939) engine control system, activations, system checks and maintenance reset.

PTM powertrain control system in **D Series** models, clutch pressure check and calibrations.

Troubleshooting guides by symptom in the **C-2.8 / C-3.6** (on SAE J1939) engine control system.



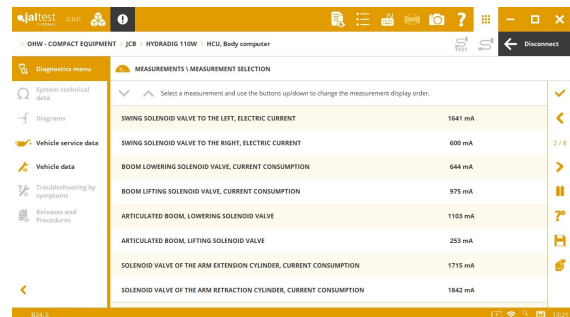
DIECI

EDC MD1 CE101 engine control system, maintenance reset for the battery replacement.

JCB

- ⊕ **IC** instrument cluster for wheel loaders.
- ⊕ **HCU**, **IC** and **PTM** systems in the **Hydradig Series** model.

Maintenance reset in **CLUSTER** instrument cluster for compact excavators.



JOHN DEERE

- ⊕ **IG2** system for the **L Series** dozer.
- ⊕ **IGC**, **JSL**, **JSR**, **PDU** and **VC2** systems for **L Series** and **P Series** dozers.

EDC YDECO engine control system from **YANMAR**, operation data, activations and system checks.

The screenshot shows the 'SYSTEM DATA \ OPERATION DATA \ ENGINE LOAD PROFILE' section. A message states: 'AFTER THIS INFORMATION, THE FOLLOWING DATA TABLES WILL BE DISPLAYED: ENGINE LOAD PROFILE'. The table below shows engine load hours at various RPM levels (0, 1000, 1200, 1500, 1800 RPM) across different load percentages (0% to 90%) and total hours.

	0 RPM	1000 RPM	1200 RPM	1500 RPM	1800 RPM
0 %	4.70 h	0.00 h	0.00 h	0.00 h	0.00 h
20 %	0.00 h	0.00 h	0.00 h	0.00 h	0.00 h
40 %	0.00 h	0.00 h	0.00 h	0.00 h	0.00 h
50 %	0.00 h	0.00 h	0.00 h	0.00 h	0.00 h
60 %	0.00 h	0.00 h	0.00 h	0.00 h	0.00 h
70 %	0.00 h	0.00 h	0.00 h	0.00 h	185.20 h
80 %	0.00 h	0.00 h	0.00 h	0.00 h	89.98 h
90 %	0.00 h	0.00 h	0.00 h	0.00 h	0.00 h
HOURS	0.00 h	0.00 h	0.00 h	0.00 h	0.00 h
PERCENTAGE	0.00 %	0.00 %	0.00 %	0.00 %	0.00 %

KOMATSU

New wiring diagram configurations in the **PUMP, Monitor D** hydraulic system and the **MON, Monitor D** instrument cluster.

STATIONARYENGINE

CATERPILLAR

C-27 and C-32 (on CDL) engine control system, injector parameter configuration.

ARD exhaust gas aftertreatment system, system checks.

Fault code troubleshooting guides in **C-2.8 / C-3.6, C-9.3** engine control systems and **ARD** and **SCR / DEF** exhaust gas aftertreatment systems.

DEUTZ

EMR5 EDC MD1 (on SAE J1939) engine control system, maintenance reset for the ash content correction in the Diesel Particulate Filter.

DOOSAN

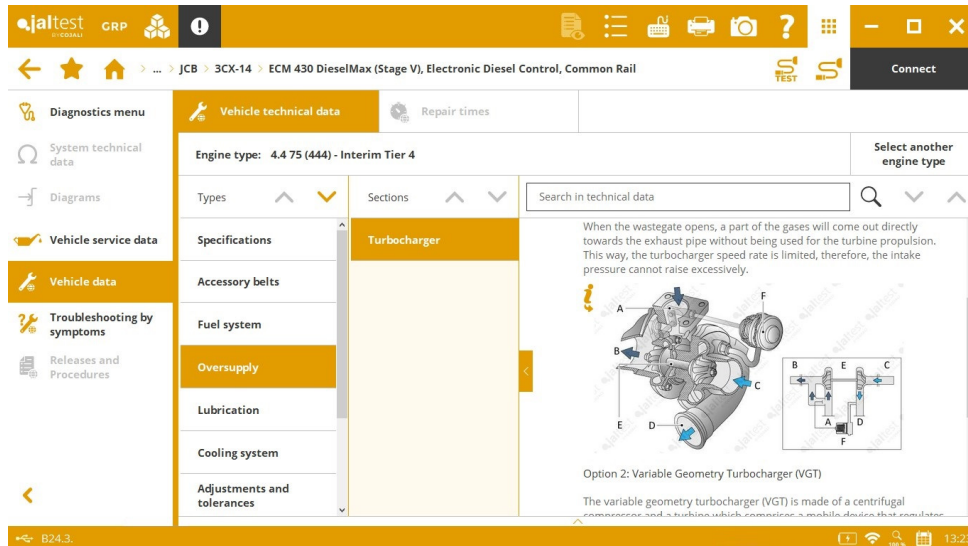
⊕ **DL06/DL08 Stage V** engine control system.

DM01, DM02 and **DM03** engine control systems, system checks, injector parameter configuration and oil change counter reset.

JCB

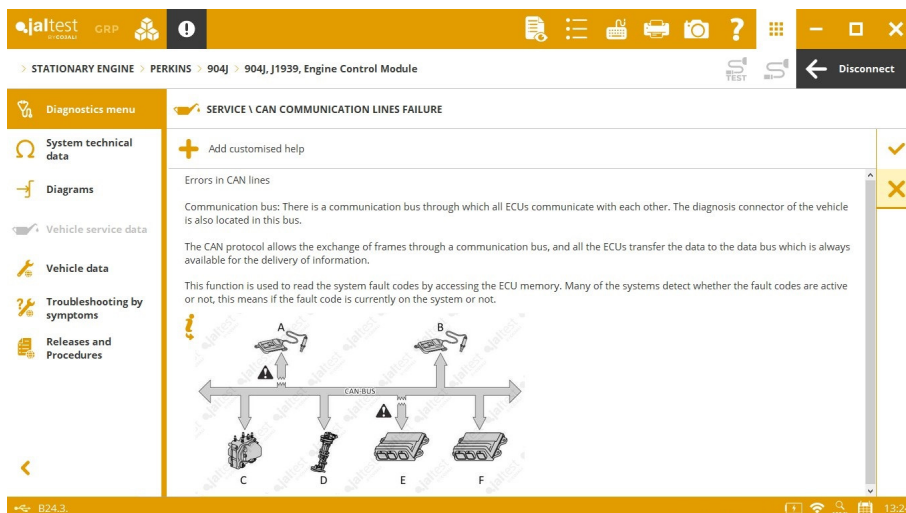
DieselMax 448, Stage V engine control system, activations, system checks, parameter configuration and maintenance reset.

In addition, new technical data in **JCB** engine types.



PERKINS

1204E, 1206E and **9043** (on SAE J1939) engine control systems, fault code clearing in CAN lines.



MULTI-PURPOSE VEHICLE

Extended diagnostics coverage for engine control systems. It is important to note new functionalities in the **DEUTZ Stage V** engine control system in **HANSA** and **SCARAB** brands.

