



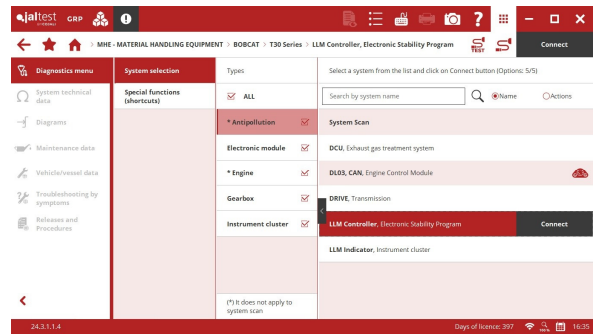
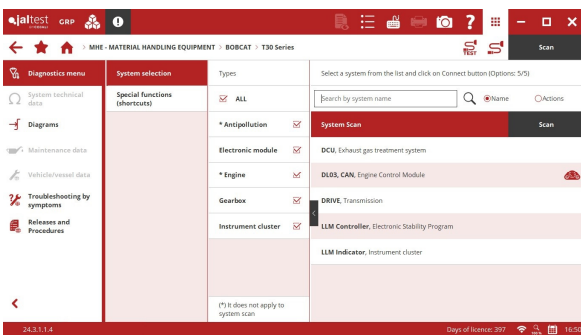
 **jaltest**
MHE
MATERIAL HANDLING

INNOVATIONS 24.3

SYSTEM SCAN AND CONNECTION

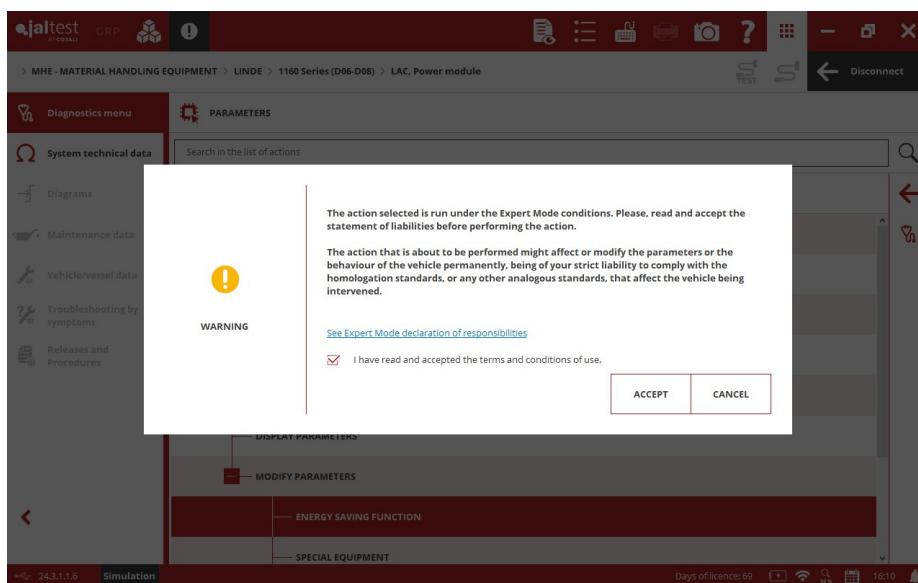
In this version, the location of the system scan functionality has been changed, it is now pre-selected by default in the list of systems when accessing a model. It is possible to use the system type selection filters to perform the system scan of only those systems identified as main systems.

In addition, from this version, the button to connect to a system appears together with the selected system.

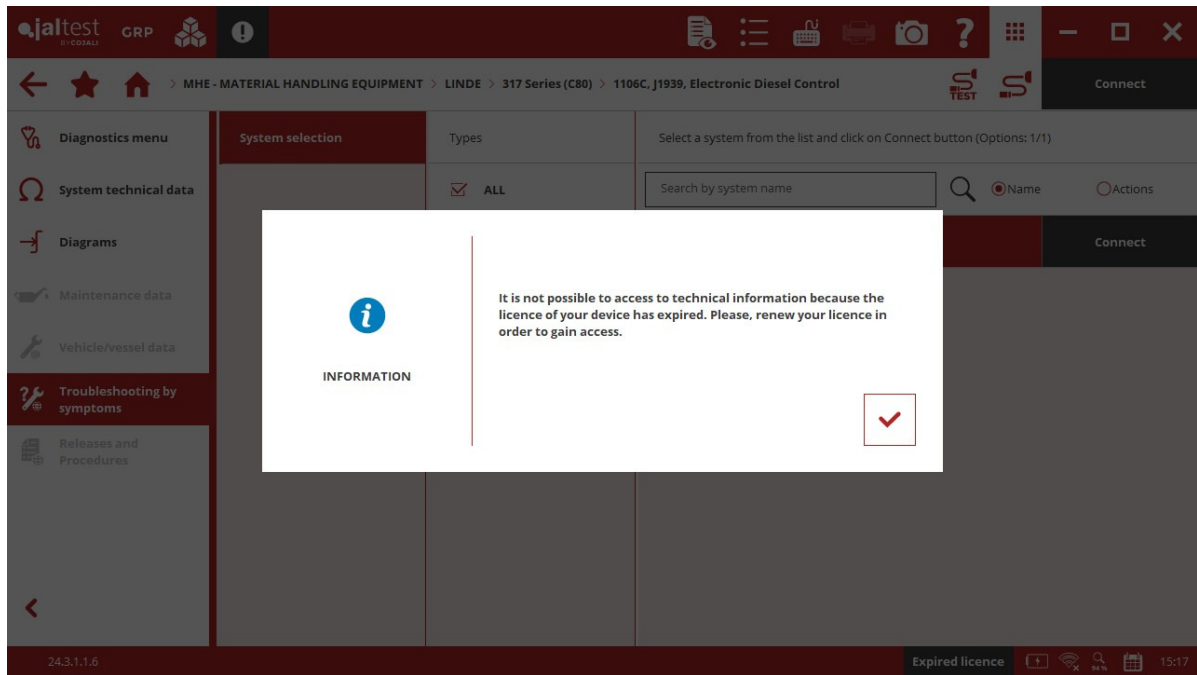


OTHER FUNCTIONALITIES

- Removal of expert mode management by code. Therefore, from this version, there will be no code to enable the expert mode, it is only necessary to accept the terms and conditions of use. Jaltest Diagnostics will continue to inform the users in all advanced actions under expert mode so that they can take the necessary precautions. On the other hand, for enterprises where expert mode code would be useful, the creation of user roles from GRP is recommended in order to have different levels of access.



- Improved representation of measurements in diagnostics reports.
- To avoid excessive number of clicks when accessing a system, connection instructions are no longer displayed. If more information is required, it is necessary to go to the connection information button to access connection instructions on which cable to use.
- The technical information buttons are not disabled when the licence expires, however, access is not allowed.



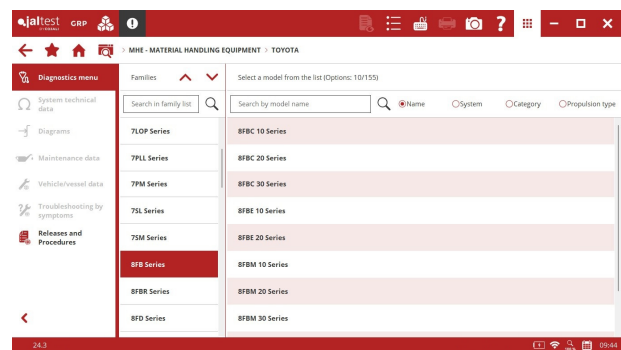
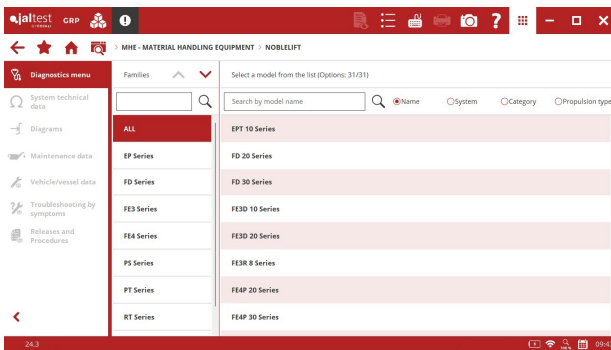
- Improved management of licences and subscribed products. From this moment on, the Jaltest licence menu displays a breakdown of the status and expiry date of each subscribed module.

Take into account that this document is only a summary of the most relevant information of this new version. For further information, please visit Jaltest Report.

BRANDS AND MODELS

This version includes the **NOBLELIFT** brand.

In addition, the number of models in the following brands has increased: **HYSTER** (H Series and RS Series families), **JUNGHEINRICH** (EFG Series family), **LINDE** (H Series family) and **TOYOTA** (8FBE, 8FBC and 8FBM Series families) in which models of different types of vehicles, both electric and internal combustion engines, have been added.



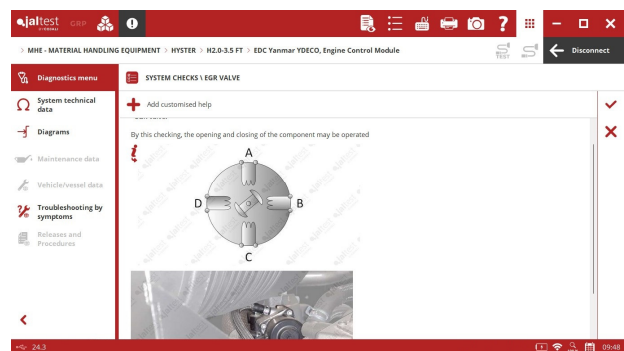
DIAGNOSTICS AND SYSTEMS

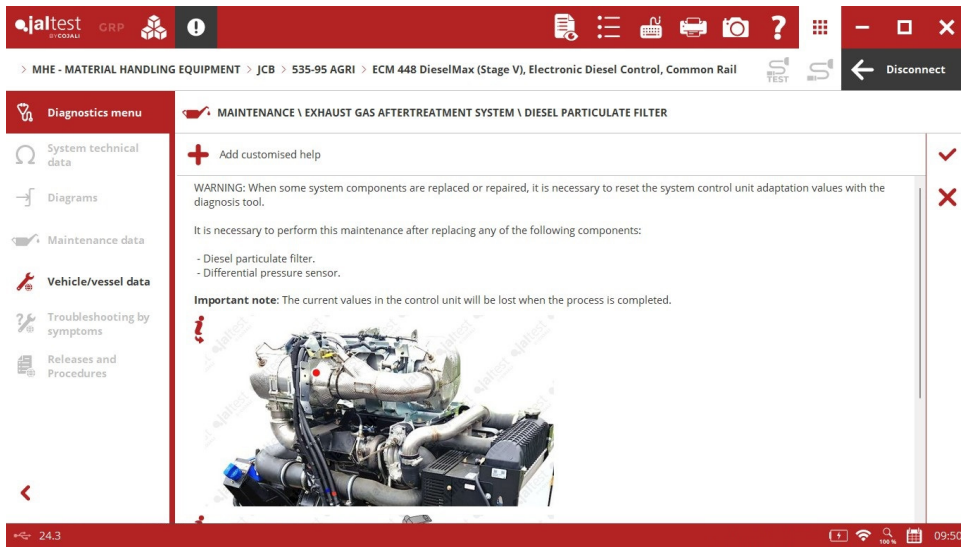
HYSTER

Yanmar EDC engine control system in models of **H Series** families, operation data, activations and system checks.

JCB

ECM 448 DieselMax (Stage V) engine control system, activations, system checks such as injector coding and maintenance operations of the exhaust gas aftertreatment system.

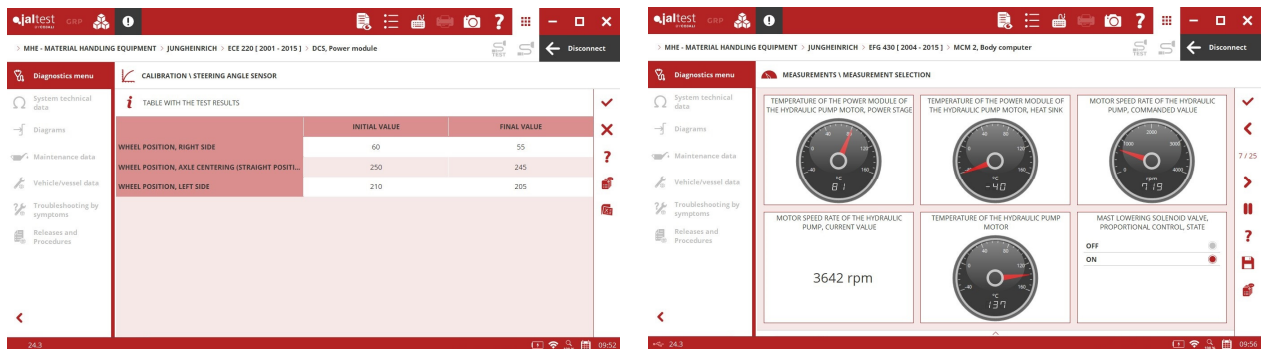




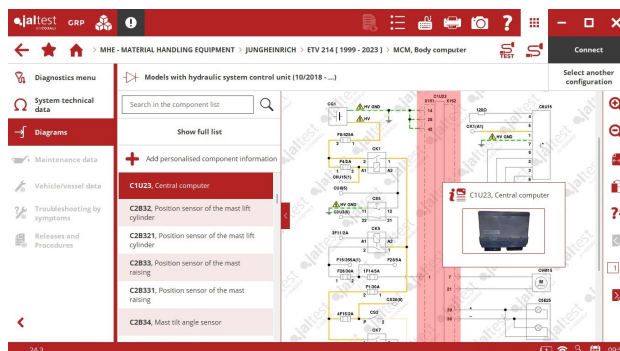
JUNGHEINRICH

⊕ **TPM** and **DCS** power modules for order-picking pallet trucks that include parameter configurations and calibrations.

⊕ **MCM 2** central computer for **EFG 4xx** for electric forklifts.

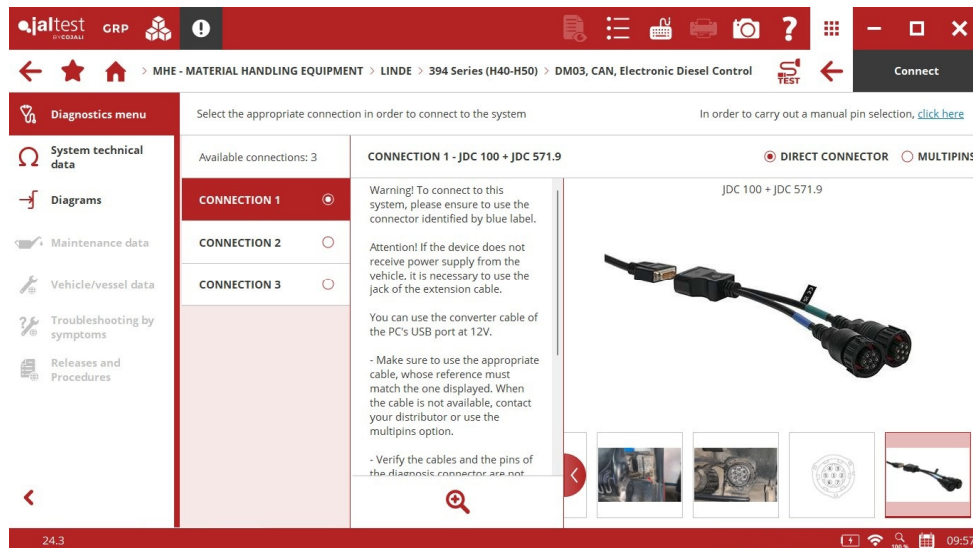


In addition, new wiring diagram configurations available in the **MCM** central computer for retractable forklifts of **ETV Series** and **ETM Series** families, including images and component technical data.



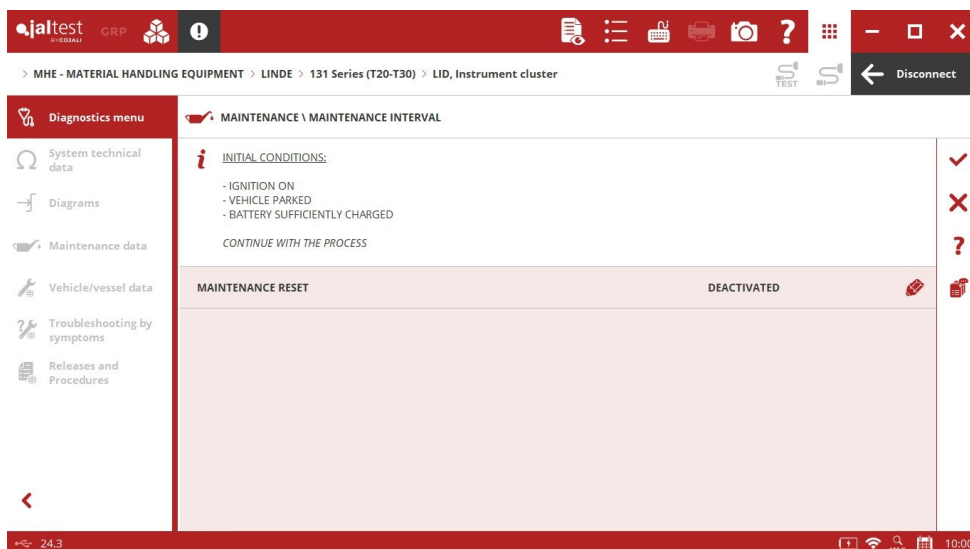
LINDE

+ **JDC 571.9** connector to communicate with the different engine control systems installed in **H Series** internal combustion forklifts.



+ **GCP** engine control system for **H Series** forklifts.

+ **LID** instrument cluster for electric pallet jacks that includes maintenance operations.



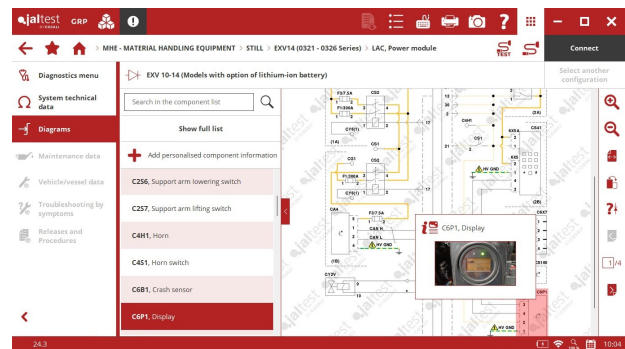
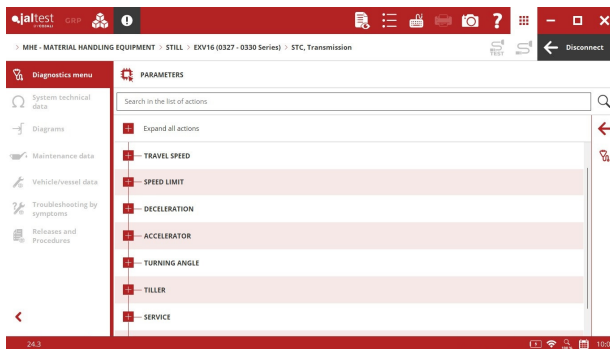
MERLO

Perkins 904J, J1939 engine control system for telescopic handlers, fault code clearing in CAN lines.

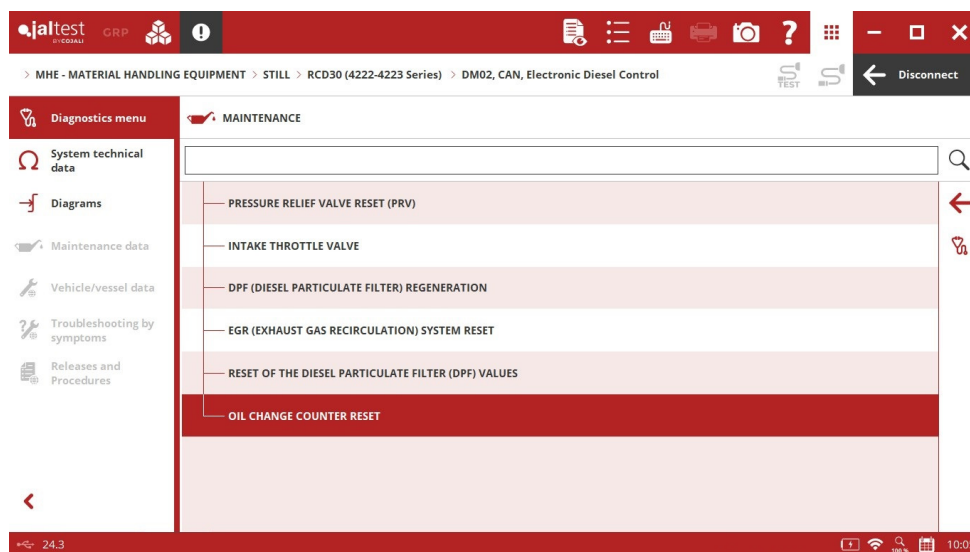
STILL

New functionalities and new parameters in the **STC** power module for electric pallet jacks and stackers.

Wiring diagram configurations in the **LAC** power module for pallet jacks and stackers of **EXU Series** and **EXV Series** families, including images and component technical data.

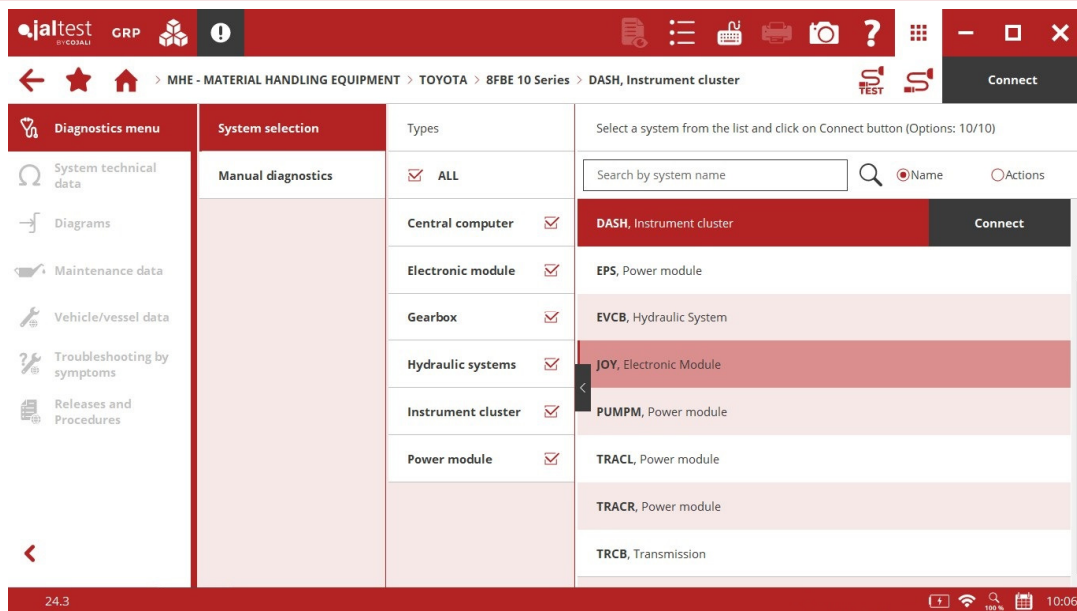


Doosan DM02 engine control system for internal combustion forklifts of **RCD Series** and hybrid **RX70 Series** families, maintenance operations.



TOYOTA

⊕ New systems in **8FBE Series**, **8FBC Series** and **8FBM Series** electric forklifts, highlighting instrument cluster, transmission, hydraulic systems and power modules.



Wiring diagram configurations in the **ICH2** central computer for pallet jacks and stackers of **Levio Serie LPE**, **Staxio Serie SWE** and **Staxio Serie SPE** families, including images and component technical data.

