



INNOVATIONS 24.3

CV
COMMERCIAL
VEHICLE

AGV
AGRICULTURAL
EQUIPMENT

OHV
OFF-HIGHWAY
EQUIPMENT

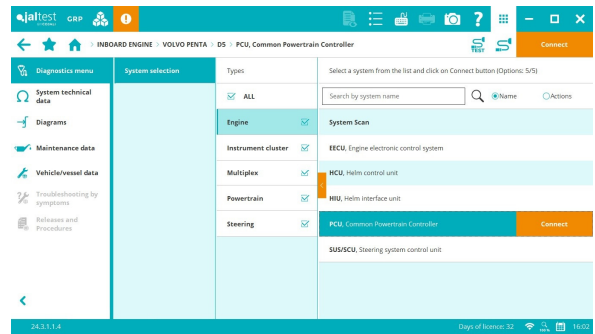
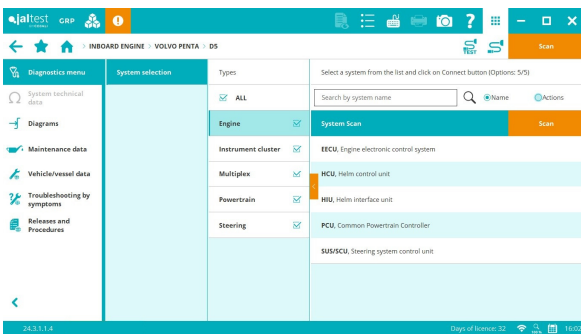
MHE
MATERIAL
HANDLING

marine
VESSELS

SYSTEM SCAN AND CONNECTION

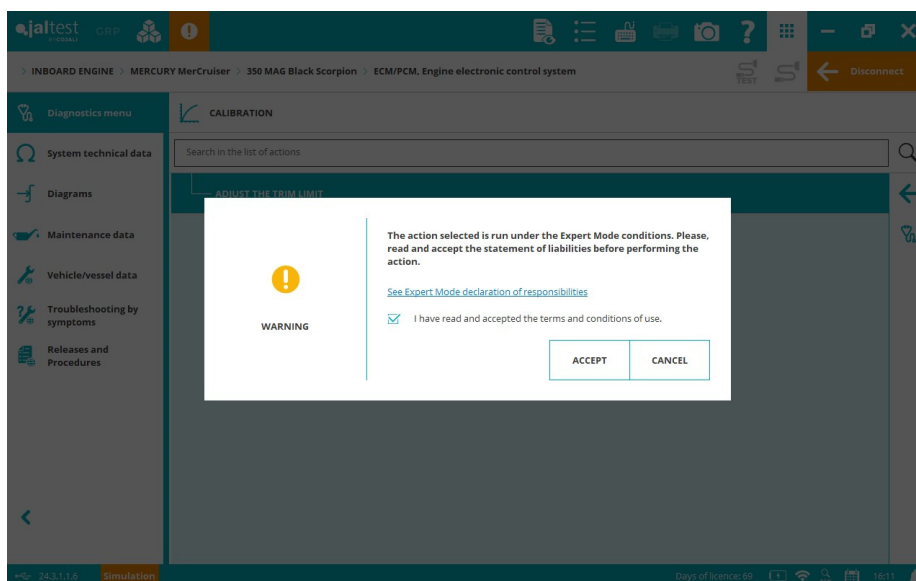
In this version, the location of the system scan functionality has been changed, it is now pre-selected by default in the list of systems when accessing a model. It is possible to use the system type selection filters to perform the system scan of only those systems identified as main systems.

In addition, from this version, the button to connect to a system appears together with the selected system.

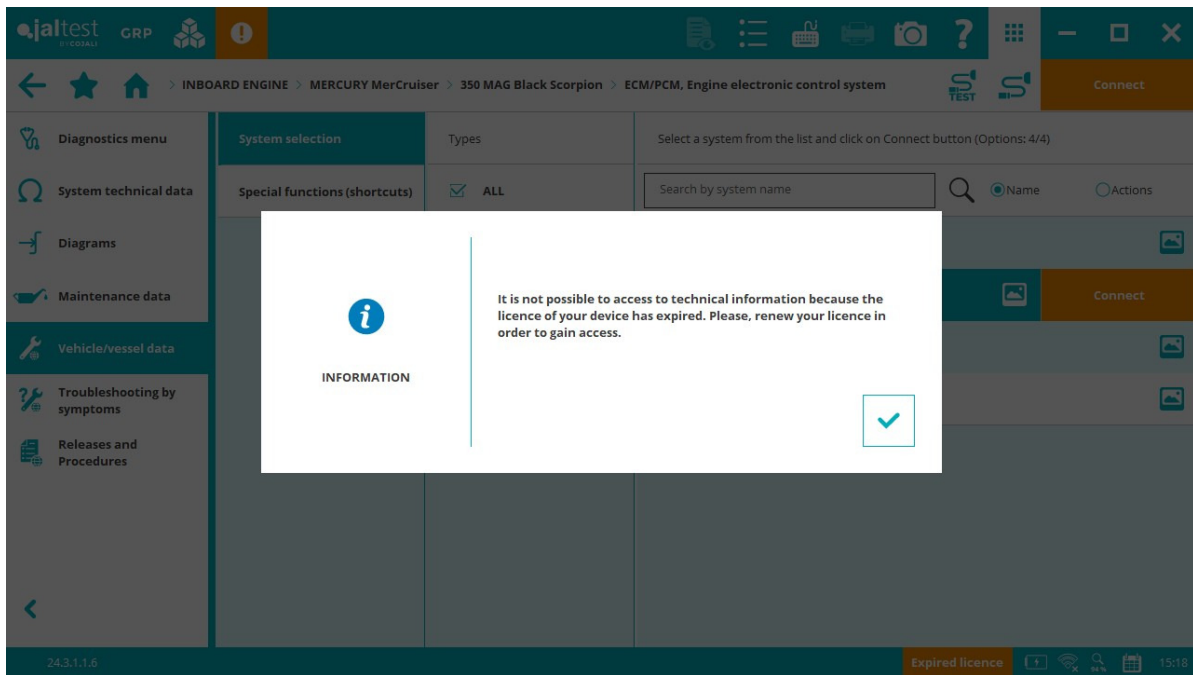


OTHER FUNCTIONALITIES

- Removal of expert mode management by code. Therefore, from this version, there will be no code to enable the expert mode, it is only necessary to accept the terms and conditions of use. Jaltest Diagnostics will continue to inform the users in all advanced actions under expert mode so that they can take the necessary precautions. On the other hand, for enterprises where expert mode code would be useful, the creation of user roles from GRP is recommended in order to have different levels of access.



- Improved representation of measurements in diagnostics reports.
- To avoid excessive number of clicks when accessing a system, connection instructions are no longer displayed. If more information is required, it is necessary to go to the connection information button to access connection instructions on which cable to use.
- The technical information buttons are not disabled when the licence expires, however, access is not allowed.



- Improved management of licences and subscribed products. From this moment on, the Jaltest licence menu displays a breakdown of the status and expiry date of each subscribed module.

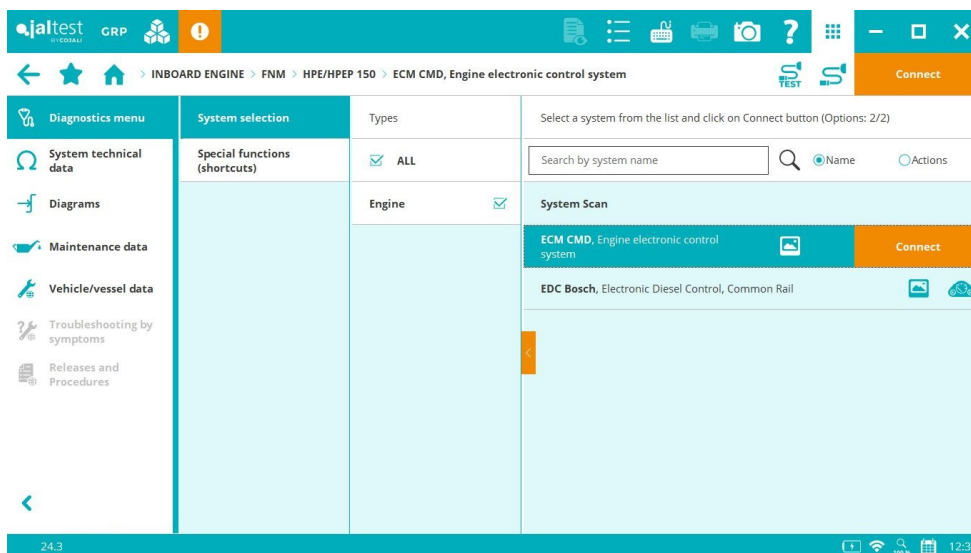
DIAGNOSTICS AND SYSTEMS

Take into account that this document is only a summary of the most relevant information of this new version. For further information, please visit Jaltest Report.

INBOARD

FNM

⊕ **ECM CMD** engine control system in models after 2005.

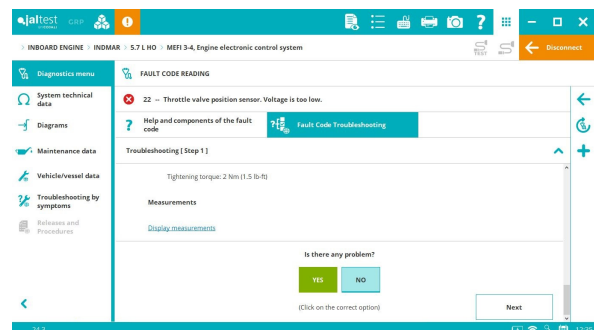


ILMOR

Fault code troubleshooting guides for all models with **MEFI 3-4**, **MEFI 5-7**, **ECM MV8** and **ECM G4** systems.

INDMAR

Fault code troubleshooting guides for all models with **MEFI 3-4**, **MEFI 5-7**, **ECM EControl** and **ECM G4** systems.

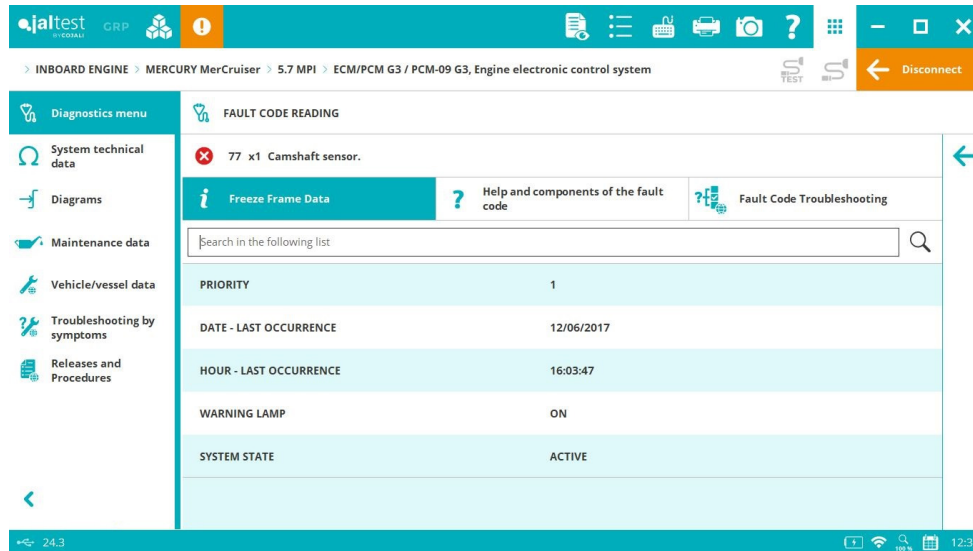


KODIAK

Fault code troubleshooting guides for all models with the **MEFI 5-7** system.

MERCURY MerCruiser

ECM/PCM 555 G3 engine control system, fault code reading with Freeze Frame Data (FFD).

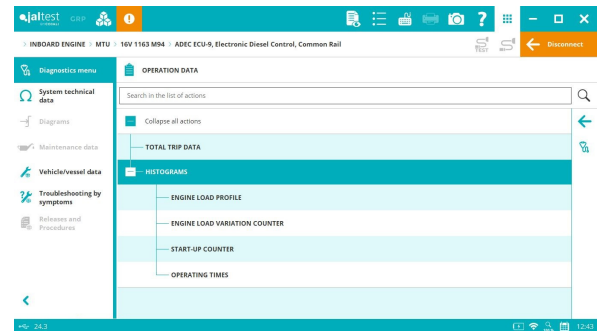
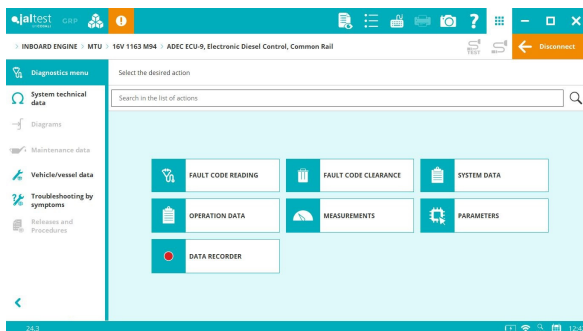


MERCURY RACING

New software variants that apply to the latest models.

MTU

MTU ADEC ECU9 engine control system, operation data, histograms, fault code reading, among others.



⊕ Models of **R6 1600 Series** and **1163 Series** families with **ADEC ECU 7** and **ADEC ECU 9** engine control systems available.

New wiring diagram configuration in all models with the **ADEC ECU9** engine control system which also includes technical data, component information and images.

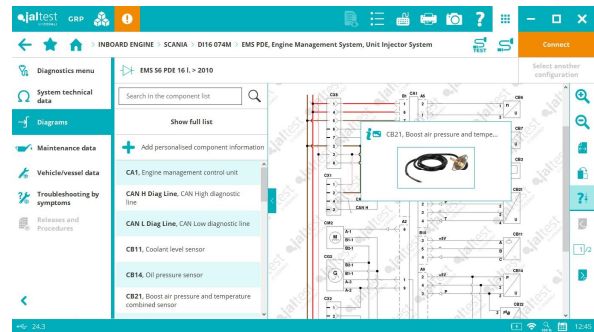
Engine technical data and maintenance services in several brand models, such as **10V 2000 M86**, **16V 2000 M96** and **12V 4000 M60**, among many others.

PCM

Fault code troubleshooting guides for all models with **MEFI 1-2**, **MEFI 3-4** and **ECM GCP** systems.

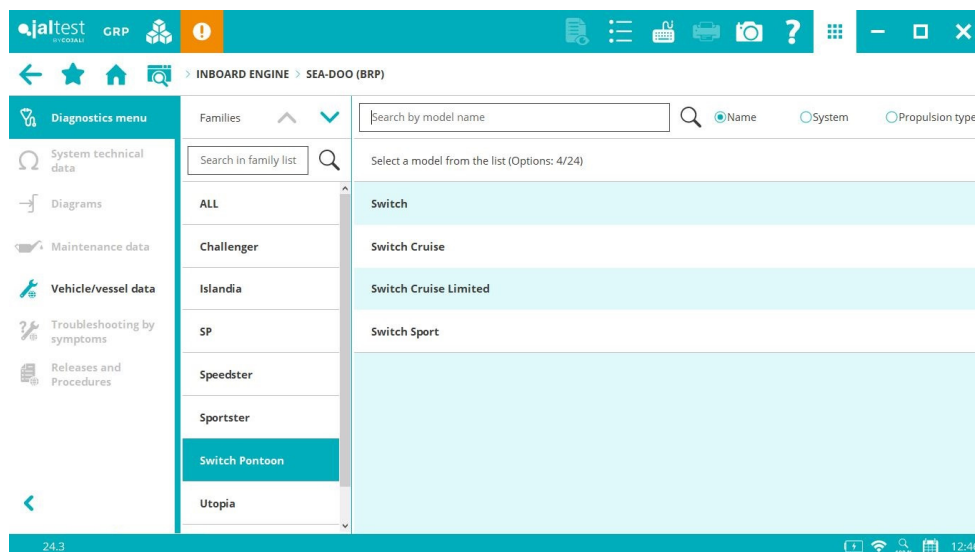
SCANIA

New wiring diagram configuration, component information, engine technical data and maintenance services in several brand models such as **DI16 074M**, **DI16 084M**, **DI16 090M**, **DI16 074M** and **DI16 304M**, among others.



SEA-DOO (BRP)

⊕ Models of the **Switch Pontoon** family with the **ECM Rotax** engine control system available with advanced functions such as activations, operating data, maintenance reset and intake throttle calibration, among others.



VETUS

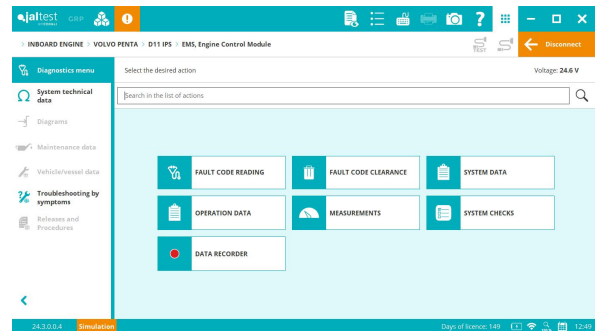
⊕ **ECM CMD** engine control system in models after 2005.

VOLVO PENTA Gasoline

Fault code troubleshooting guides for all models with **MEFI 1-2**, **MEFI 3-4** and **ECM EGC** systems.

VOLVO PENTA

- ⊕ **D11 IPS** model with the new **EMS** engine control system.



YANMAR

- ⊕ Models of the **AYEM Series** family with the **ECM Yanmar** engine control system available.

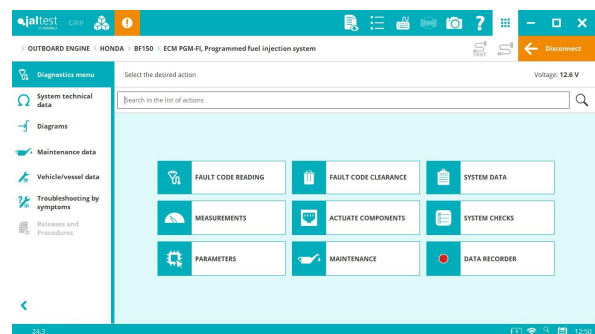
Engine technical data and maintenance services in several brand models, such as **4BY2-150**, **BY2-180**, **6BY2-220Z** and **6BY2-260Z**, among others.

OUTBOARD

HONDA

Fault code troubleshooting guides for all models.

New software variants that apply to the latest models.

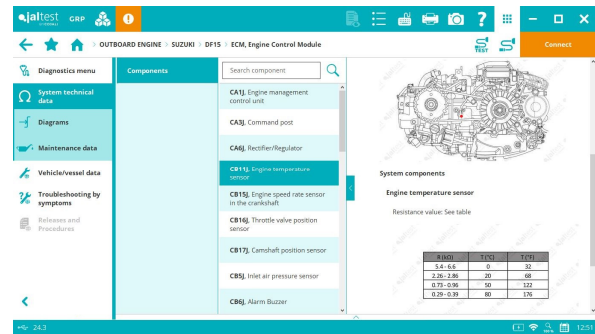


MERCURY

ECM/PCM 555 and **ECM 70 G3** engine control systems, fault code reading with Freeze Frame Data (FFD).

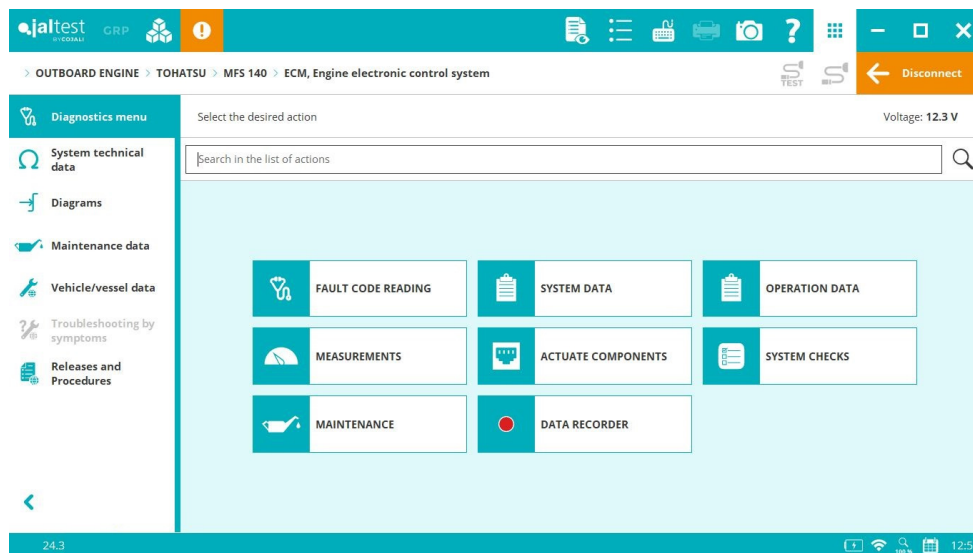
SUZUKI

Engine technical data and maintenance services in **DF9.9, DF15, DF20A, DF40** and **DF50** models.



TOHATSU

ECM engine control system in **MFS75, 90, 100, 115** and **140** models, injector activation, cylinders cut-out, idle control valve check and ignition timing test.

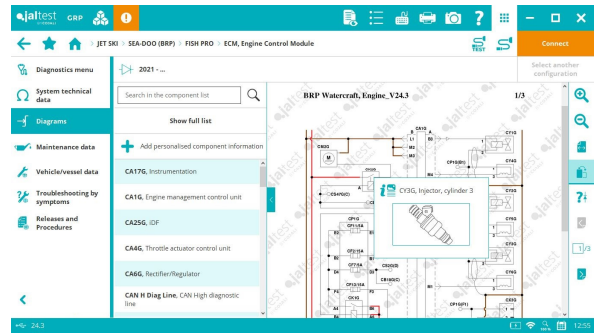
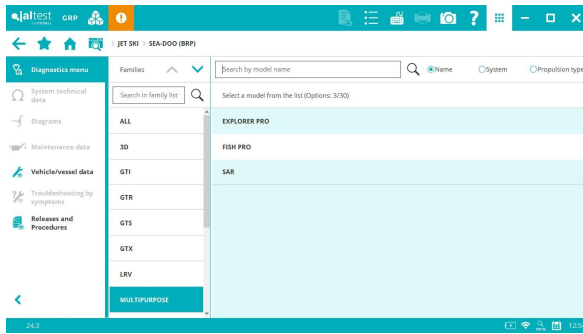


JET SKI

SEA-DOO (BRP)

⊕ **SAR** and **EXPLORER PRO** multi-purpose jet ski models.

New wiring diagram configurations in **ECM, INS** and **iS** systems in several brand models.



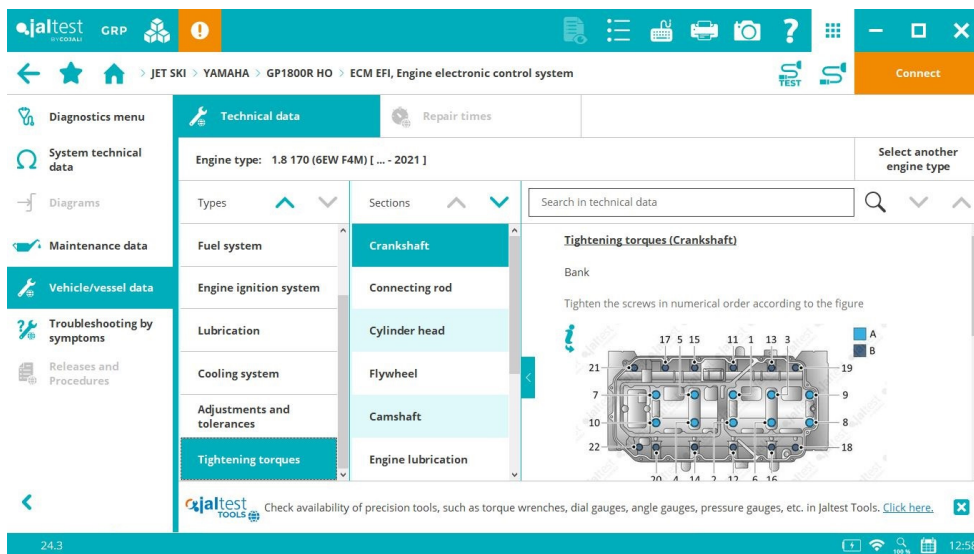
HONDA

Fault code troubleshooting guides for all models.

YAMAHA

⊕ Models such as **GP1800R, GP1800R HO, GP1800R SVHO, VX110 Deluxe, VX110 Sport, GP SVHO, FX Limited SVHO, FZR SVHO, FZS SVHO** and **VX Limited HO**.

New technical data.



STATIONARY ENGINE

CATERPILLAR

C-27 and C-32 (on CDL) engine control system, injector parameter configuration.

ARD exhaust gas aftertreatment system, system checks.

DEUTZ

EMR5 EDC MD1 (on SAE J1939) engine control system, maintenance reset for the ash content correction in the Diesel Particulate Filter.

DOOSAN

⊕ **DL06/DL08 Stage V** engine control system.

DM01, DM02 and **DM03** engine control systems, system checks, injector parameter configuration and oil change counter reset.

JCB

DieselMax 448, Stage V engine control system, activations, system checks, parameter configuration and maintenance reset.

PERKINS

1204E, 1206E and **9043** (on SAE J1939) engine control systems, fault code clearing in CAN lines.