

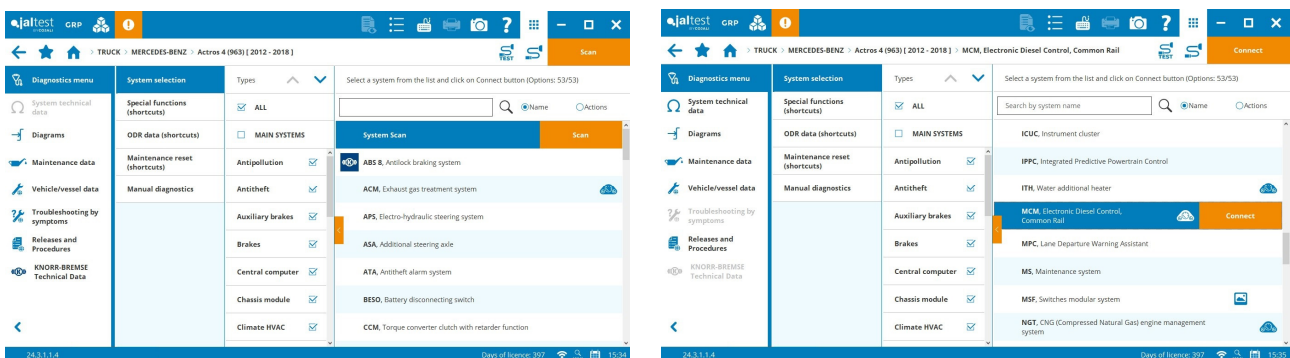


INNOVATIONS 24.3

SYSTEM SCAN AND CONNECTION

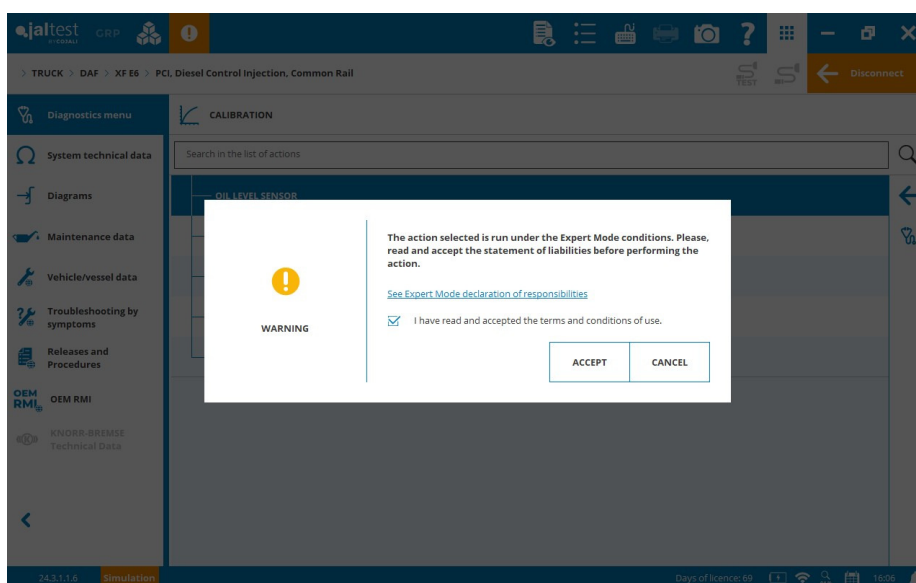
In this version, the location of the system scan functionality has been changed, it is now pre-selected by default in the list of systems when accessing a model. It is possible to use the system type selection filters to perform the system scan of only those systems identified as main systems.

In addition, from this version, the button to connect to a system appears together with the selected system.

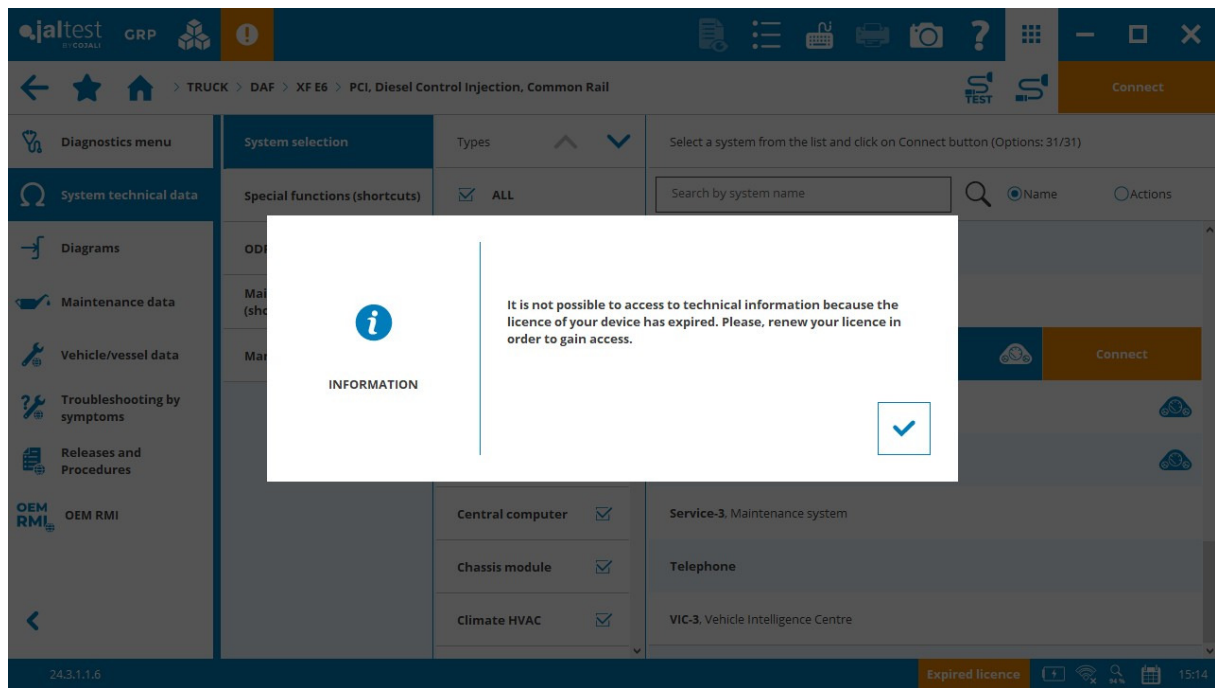


OTHER FUNCTIONALITIES

- Removal of expert mode management by code. Therefore, from this version, there will be no code to enable the expert mode, it is only necessary to accept the terms and conditions of use. Jaltest Diagnostics will continue to inform the users in all advanced actions under expert mode so that they can take the necessary precautions. On the other hand, for enterprises where expert mode code would be useful, the creation of user roles from GRP is recommended in order to have different levels of access.



- Improved representation of measurements in diagnostics reports.
- To avoid excessive number of clicks when accessing a system, connection instructions are no longer displayed. If more information is required, it is necessary to go to the connection information button to access connection instructions on which cable to use.
- The technical information buttons are not disabled when the licence expires, however, access is not allowed.



- Improved management of licences and subscribed products. From this moment on, the Jaltest licence menu displays a breakdown of the status and expiry date of each subscribed module.

Jaltest Central Services



New functionalities through the Jaltest Central Services remote service. The following functionalities, among others, are highlighted:

- **DAF**, programming of the **PCI** engine control system in Euro 6 vehicles.
- **IVECO**, programming of the **IBC3** central computer.
- **VOLVO**, programming of the **ACM** exhaust gas treatment system.

Take into account that this document is only a summary of the most relevant information of this new version. For further information, please visit Jaltest Report.

BRANDS AND MODELS

Some of the new models and brands of this version are listed below. It is important to note HINO and ISUZU brands from Japanese market.

TRUCK

BYD

ETH8 EV

EYT EV

FORD

Cargo 1843T, engine: EcoTorq Euro3

Cargo 3543D, engine: EcoTorq Euro3

IVECO

Eurocargo Euro3/5 Asia-Pacific

Tector Euro6 Latin America

MAN

TGX Latin America, engine: ... - Euro 5 EEV [2012 - ...]

MERCEDES-BENZ

Atego 9BM951.5 Euro 6 [2023 - ...]

Accelo 1316 Euro 6 (9BM951.102), engine: OM 924 LA [2023 - ...]

mitsubishi fuso

Fighter 19, engine: 6M60 [2019 - ...]

Fighter 19, engine: 4V20

UD TRUCKS

Condor, engine: GH5

VOLKSWAGEN

- New Delivery 6.160 Euro 5, engine: ISF [2018 - ...]
- New Delivery 11.180 Euro 5, engine: ISF [2018 - ...]
- Delivery Express Euro 6, engine: FPT F1C [2022 - ...]
- Constellation 14.210 Euro 6, engine: D0834LF08 [2023 - ...]
- Constellation 17.210 Euro 6, engine: D0834LF08 [2023 - ...]

BUS

ALEXANDER DENNIS

- Enviro 400H
- Enviro 500 Euro6

GÜLERYÜZ

- ECOLINE 10/12
- EFORA
- PANORA

IVECO /IRISBUS

- CROSSWAY LE CNG Euro 6-E

MERCEDES-BENZ

- Volare LO 916 (9BM979.27)
- OF/OH Euro 6 (9BM384/368)
- O 500 / MBO - Euro 5/6 (9BM382/634/685)

mitsubishi fuso

- Aero Star, engine: 6M60 [2019 - ...]
- Rosa, engine: 4D33

SCANIA

- K Series K 360C A [2020 - ...]
- K Series K 360 H [2020 - ...]
- K 460 IB

VOLVO

B320R

LIGHT COMMERCIAL VEHICLE

CITROËN

Berlingo 1.6 Hdi, engine: 9HY/9HX/9HW [2005 - 2012]

FIAT

E-Ducato [2021 - ...]

FORD

Ranger 3.0 (P703), engine: BF2S [2022 - ...]

MERCEDES-BENZ

X-Klasse (470), engine: OM 642.889 [2018 - ...]

NISSAN

Townstar 1.3 DIG-T, engine: H5H 490 [2022 - ...]

e-NV200 EM57 [2014 - 2022]

PEUGEOT

Partner 1.6 Hdi, engine: 9HY/9HX/9HW [2005 - 2012]

RENAULT

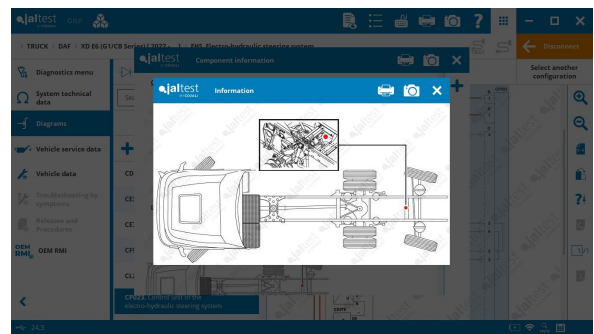
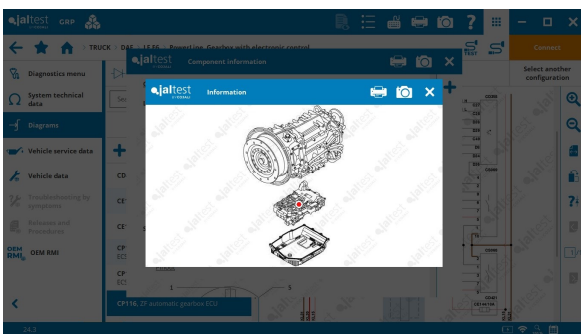
Express 1.3 TCe, engine: H5H 470/490 [2021 - ...]

DIAGNOSTICS AND SYSTEMS

TRUCK

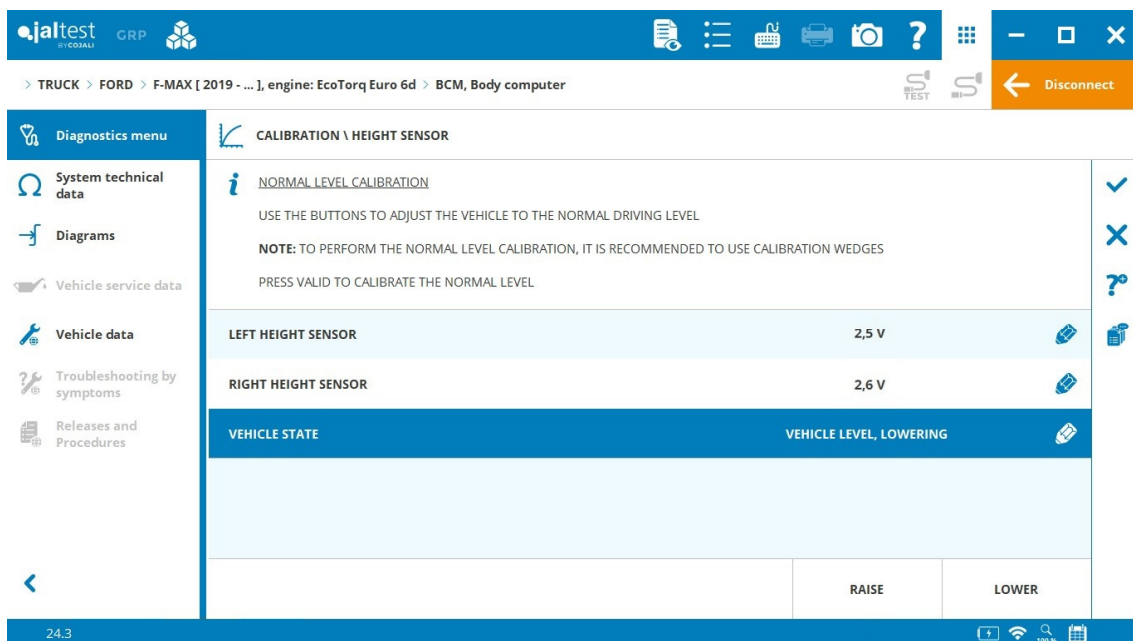
DAF

- ⊕ **ECS4/ECS6** engine control system in **LF Euro6 [2022 - ...]** models.
- ⊕ **ZF PowerLine** transmission in **LF Euro6 [2022 - ...]** models.
- ⊕ **EHS** electro-hydraulic steering control system in **CF, XD, XG** and **Euro6** models.



FORD

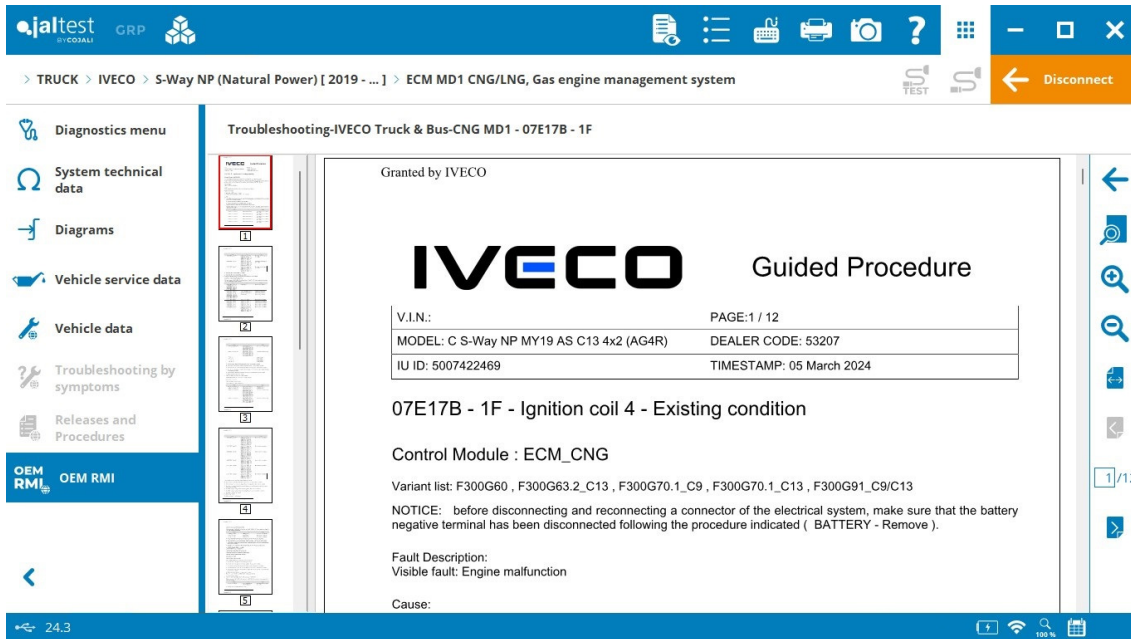
- ⊕ **ZF EcoTronic** transmission in **Cargo** models with **Euro5/6** engines.
- BCM** central computer, height sensor calibration and suspension pressure calibration.



EDC 17 CV41 engine control system in **F-Max** models, check of the 2-speed water pump and air purge of the fuel system for the exhaust gas aftertreatment system.

IVECO

New **OEM RMI** technical information with fault code troubleshooting guides included in the **ECM MD1 CNG** engine control system.



MAN

NoNOx exhaust gas aftertreatment system in models of the **TG2 [2013 - ...]** series, control unit replacement with the same reference without restrictions to certain serial numbers.



New technical information in diagrams by model of the brand, in addition, new diagrams by model in **TGM** and **TGL** models of the **TG3** series.

Information available with the subscription of the new technical information module 'Jaltest INFO Plus'.

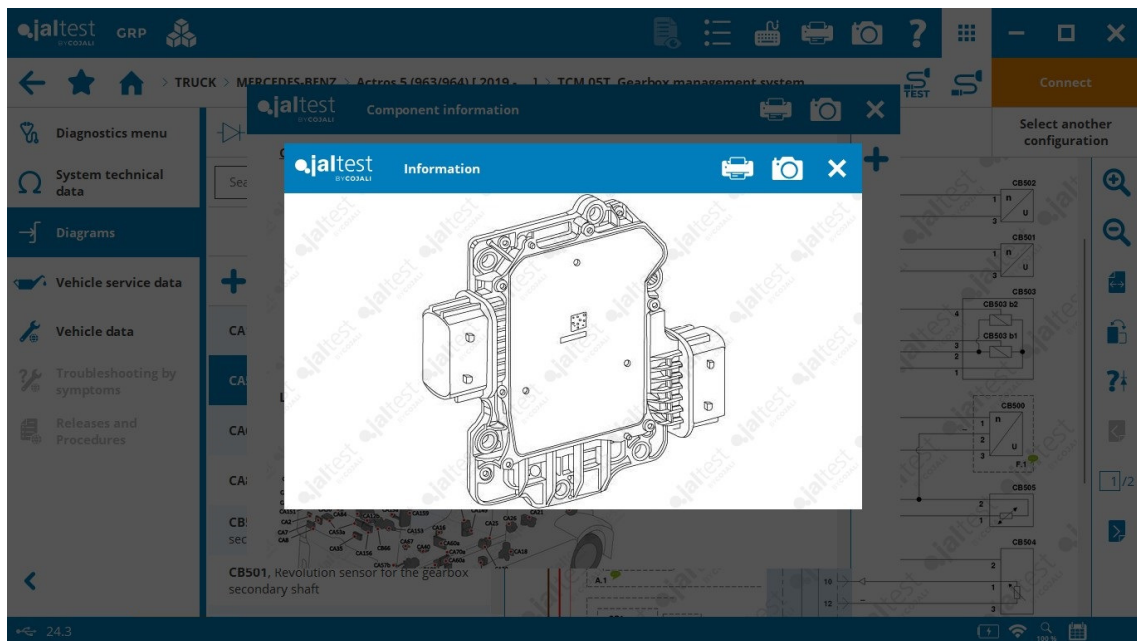
EBS5/5.x (on **KWP2000**) braking system, control unit software update.

Information available with the 'Knorr-Bremse Diagnostics' subscription, the new diagnostics platform for all Knorr-Bremse systems.

MERCEDES-BENZ

⊕ **Wabco TCM 05T** transmission for **G211-12/ G 330-12 / G 291-12 / G 280-16** gearboxes in **Actros 5 (963/964), Arocs 5 (964)** and **Atego 9BM951.5 Euro6** models.

With this new electronic control system, the manufacturer improves efficiency by optimising the gear shift process.



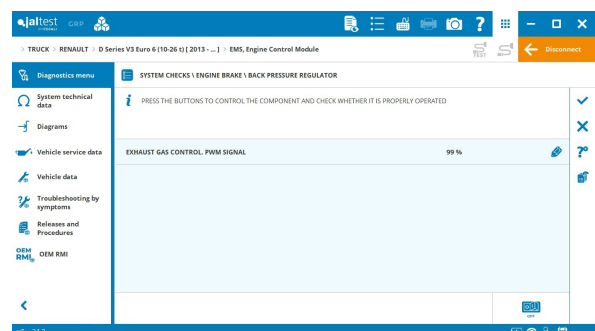
New technical information in diagrams by model of the brand, in addition, new diagrams by model in **Atego (967)** and **Atego 5 (967)** models.

Information available with the subscription of the new technical information module 'Jaltest INFO Plus'.

RENAULT

In vehicles with **V3 technology**:

EMS engine control system, check of the exhaust gas back pressure regulation. Poor performance of this regulation leads to reduce efficiency and premature engine wear, among other effects.



EAC1 (on SAE 1587) compressed air generation and maintenance system, control of new references and software versions.

Information available with the 'Knorr-Bremse Diagnostics' subscription, the new diagnostics platform for all Knorr-Bremse systems.

SCANIA

OEM RMI SCANIA documentation.



In addition to Jaltest technical information, it is now possible to access the manufacturer's repair and maintenance information (RMI), integrated in Jaltest, while accessing and diagnosing Scania vehicles. This library provides access to all technical information documents through the chassis number (VIN).

OEM Repair and Maintenance Information

Use the correct lubricant!

Lubricate all gaskets, seals and O-rings.

See the parts catalogue for the correct part number of the lubricant.

! IMPORTANT!

Do not lubricate the splines on the input shaft in the gearbox. There is a risk that clutch disc function will be impaired if grease gets onto it. The joint is surface treated to prevent corrosion.

Work from below

1. Assemble the lifting accessory and fit the lifting accessory on the gearbox. See [Description - Lifting accessory assembly](#).

! Information!


Do not press the gearbox up against the guide sleeves in the gearbox beam. It may then be difficult to get the gearbox into place.

2. Lubricate the O-ring on the input shaft before docking the gearbox against the engine.

Renew the O-ring if it appears to be worn or damaged.

! IMPORTANT!

The O-ring on the input shaft that enters the support bearing must be lubricated with grease.



OEM Repair and Maintenance Information

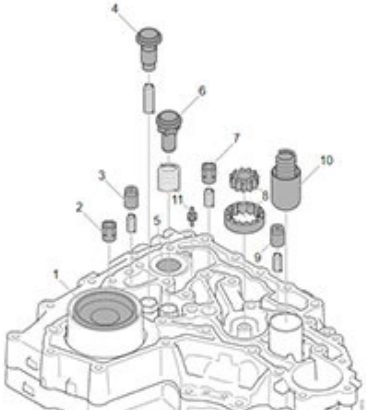
8. Remove the valves and the oil pump.

Carefully remove the oil accumulator so that the spring does not damage the cylinder walls. Remove the spring.

If no oil has leaked via the oil accumulator operating air drain (connection hose from #3 on solenoid valve block V97), the piston should not be removed from the cylinder.

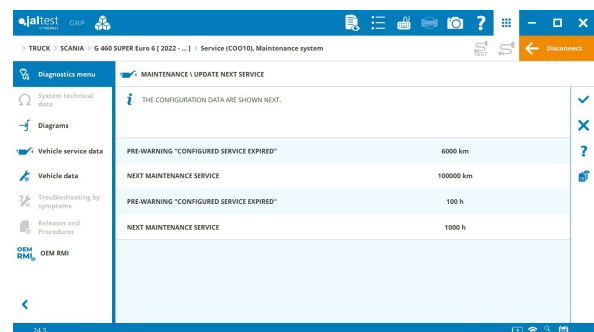
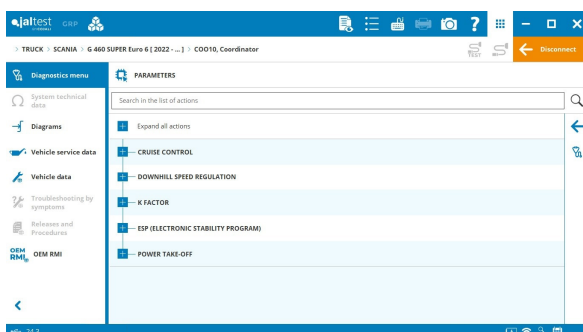
Remove the valves and their springs.

Mark the oil pump so it can be refitted in the same position. Remove the oil pump.



Information available with the 'Jaltest OEM RMI Scania' subscription.

COO10 coordinator in models of the **SUPER** range from 2023 onwards, configuration of the next service date, configuration of power take-off parameters and calibration of the steering angle sensor, among others.



TMS3 transmission in **G, L, P, R** and **S Series** models, control of emptying and filling of the crankcase oil tank, among others.

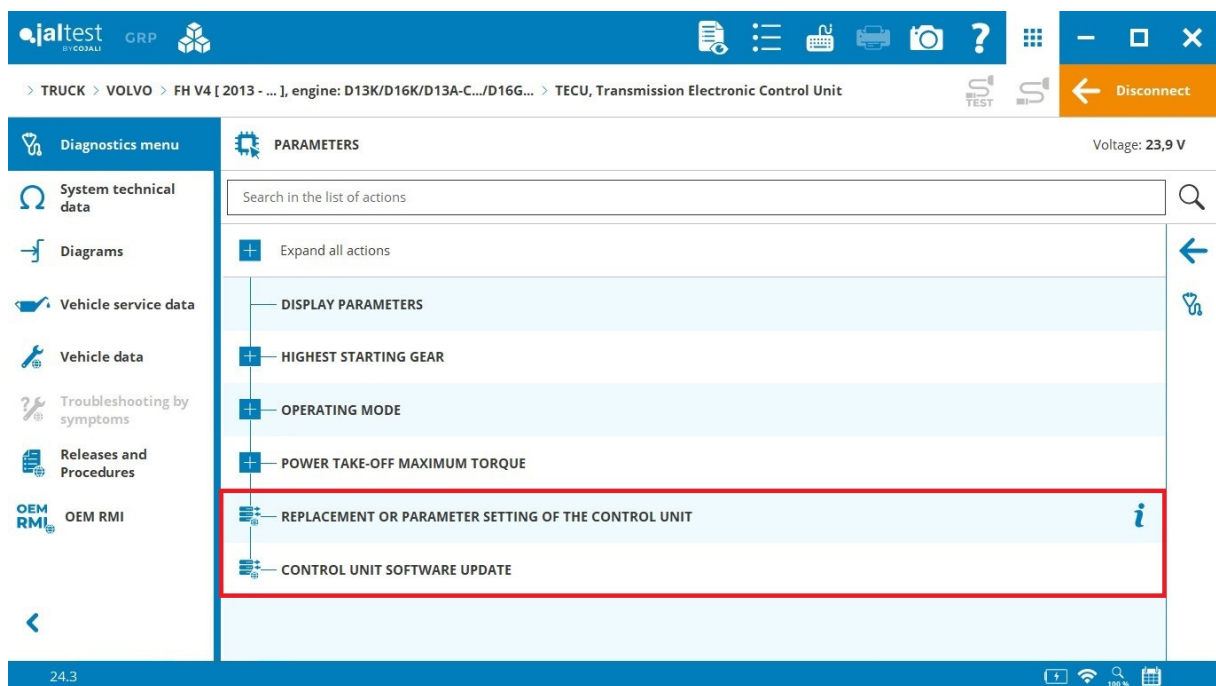
VOLKSWAGEN

⊕ **FPT FIC EDC** engine control system in **Delivery 6.170 Euro6** and **Delivery Express Euro6** models.

VOLVO

In vehicles with **V4 technology**:

New JCS (Jaltest Central Services) functions for updating or replacing the control unit for the following systems: **ACM**, **TECU**, among others.



EBS5/5.x braking system, control unit replacement and control unit software update.

Information available with the 'Knorr-Bremse Diagnostics' subscription, the new diagnostics platform for all Knorr-Bremse systems.

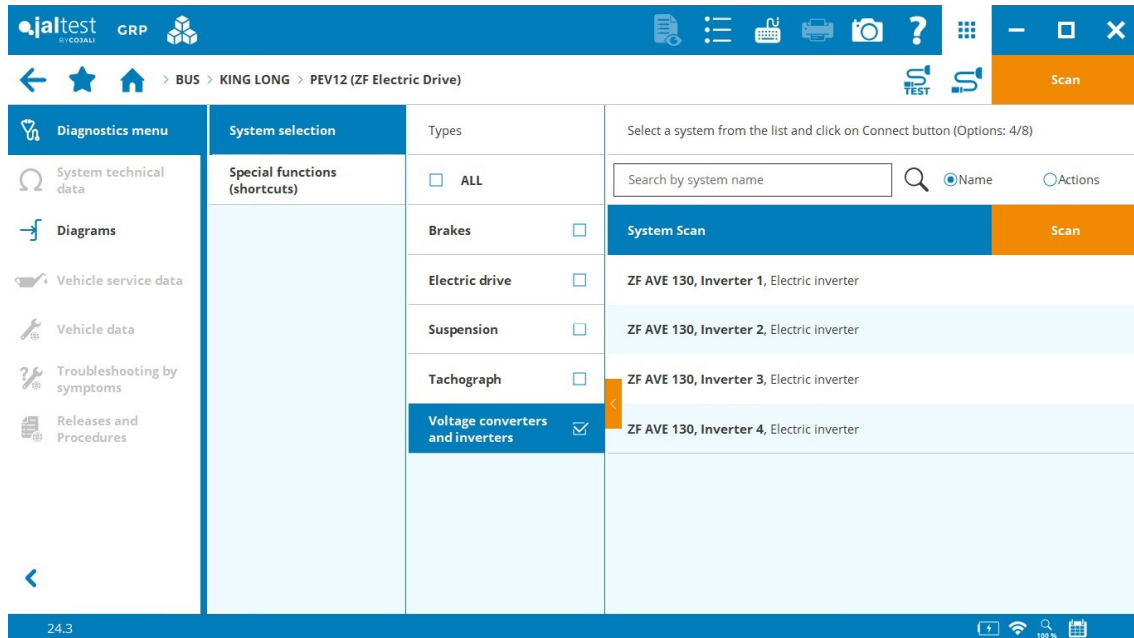
BUS

IRIZAR

⊕ **TCU** electric motor control system, **ESS** energy storage system, **Master 25** multiplexed system and **SCU** hydraulic pump controller for electric vehicles in the **ie Tram / ie bus/ i2e** model.

KING LONG

⊕ **Inverter 1 / 2 / 3 and 4** systems for electric vehicles in the **PEV12** model.



OTOKAR

New technical information in diagrams by model of the brand, in addition, new diagrams by model in **Vectio**, **Territo** and **Ulyso Euro6** models.

Information available with the subscription of the new technical information module 'Jaltest INFO Plus'.

VDL

New wiring diagram configurations in the **ECAS CAN 2** suspension control system in **Citea** and **Futura** models.

TRAILER

KNORR-BREMSE

Information available with the 'Knorr-Bremse Diagnostics' subscription, the new diagnostics platform for all Knorr-Bremse systems.

- ⊕ **TRM** (Train Road Module).
- ⊕ **TPMS** tyre pressure control system.
- ⊕ **TIM** (Trailer Information Module).

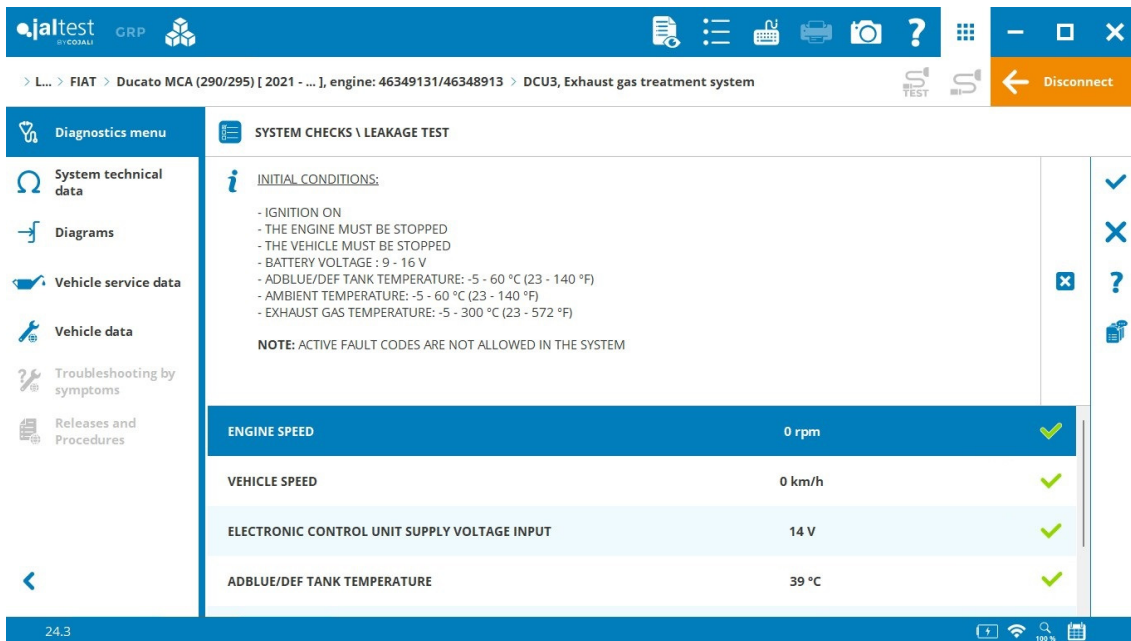
TEBS G2.x brake control system, modification of relevant and frequent parameters in some system variants. In addition, the module replacement and software update of the control units are completed by adding the old TEBS6 variants.

LIGHT COMMERCIAL VEHICLE

FIAT

DCU exhaust gas aftertreatment system in **Fiat Ducato [21]**, system leak test.

⊕ **PAM** parking assistance system.



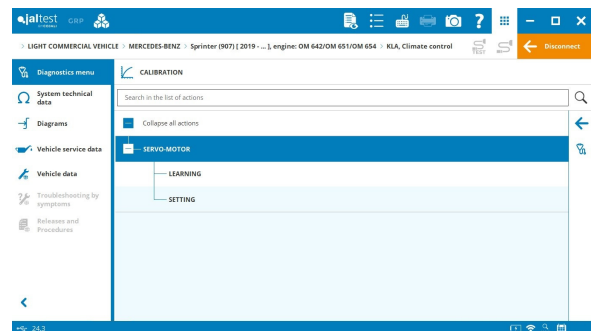
IVECO

⊕ **ASM AMK AirPro** suspension control system in **Daily [2021]** models.

MERCEDES-BENZ

KLA climate control in **Sprinter 907/910** models, calibration of actuator motors.

OM654 EDC engine control system in **Sprinter 907/910** and **Vito 447** models, maintenance reset after the Diesel Particulate Filter replacement.



VOLKSWAGEN

EDC MD1 engine control system in **Crafter [2021 - ...]** models, leak test and fuel system priming, among others.

- ⊕ **AT 8-Speed ODR** transmission in **Amarok [2016 - ...]** and **Crafter [2021 - ...]** models.
- ⊕ **RFK** rear camera in **Caddy [2020 - ...]** models.

MANUFACTURER

CUMMINS

It is important to highlight improvements in the configuration of remote power take-off parameters for all **CUMMINS** engine control systems.

Replacement procedures of the fuel filter, oil filter and AdBlue/DEF filter, and check procedure of the fuel pump for all **CUMMINS** engines.

New wiring diagram configurations in several systems such as **B4.5/6.7 CM2350, ISF/F3.8 CM2350** and **B6.7N CM2380**.

More than 40 **SMART** troubleshooting guides in the **X15 CM2670** engine control system and more than 200 **SMART** troubleshooting guides in the **ISV CM3230** engine control system.

Information available with the subscription of the new technical information module 'Jaltest INFO Plus'.

ISF/F3.8 CM2350 engine control system, DPF reset.

KNORR-BREMSE

Information available with the 'Knorr-Bremse Diagnostics' subscription, the new diagnostics platform for all Knorr-Bremse systems.

- ⊕ **iTPMS** tyre pressure monitoring system for commercial vehicles.

The connection instructions in Knorr-Bremse systems have been expanded significantly. In addition, the ECU reset function has been included in **EPB** parking brake control systems and in **EAC** compressed air generation and maintenance systems of different vehicle brands. In the latter systems, the user experience has been improved with the implementation of the 'DISPLAY CARTRIDGE CONDITION' maintenance which directly includes the replacement function if necessary and/or counter reset.

ZF

ZF AVE 130 control system of the electric drive axle, operation data relating to voltages and currents, as well as battery state and temperatures.

The screenshot displays the 'OPERATION DATA \ BATTERY STATE OF HEALTH' section in the jaltest CV software. The interface includes a navigation menu on the left and a main data table. The table lists individual battery cells (CELL 0 to CELL 6) with their respective percentage of charge and operating time in hours. A summary row at the bottom indicates the overall 'BATTERY STATE OF HEALTH' is at 95 h.

	PERCENTAGE (%)	TIME (HOURS)
CELL 0	41	8467
CELL 1	6334	6500
CELL 2	9169	5724
CELL 3	1478	9358
CELL 4	6962	4464
CELL 5	5705	8145
CELL 6	3281	6827
BATTERY STATE OF HEALTH		95 h