

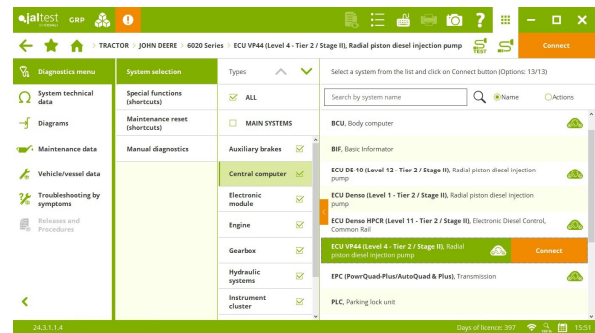
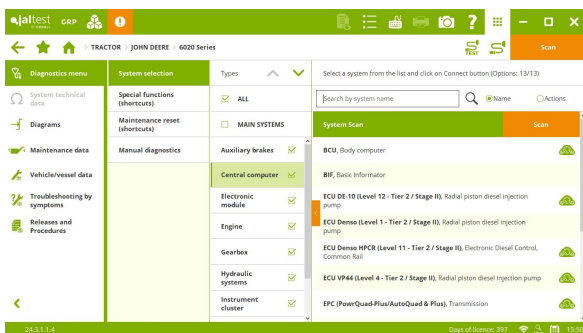


## INNOVATIONS 24.3

# SYSTEM SCAN AND CONNECTION

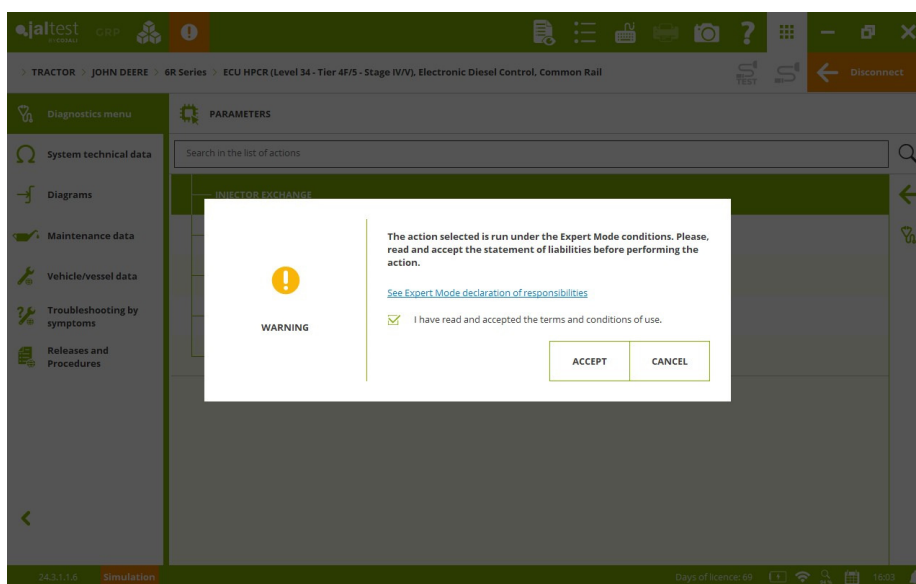
In this version, the location of the system scan functionality has been changed, it is now pre-selected by default in the list of systems when accessing a model. It is possible to use the system type selection filters to perform the system scan of only those systems identified as main systems.

In addition, from this version, the button to connect to a system appears together with the selected system.

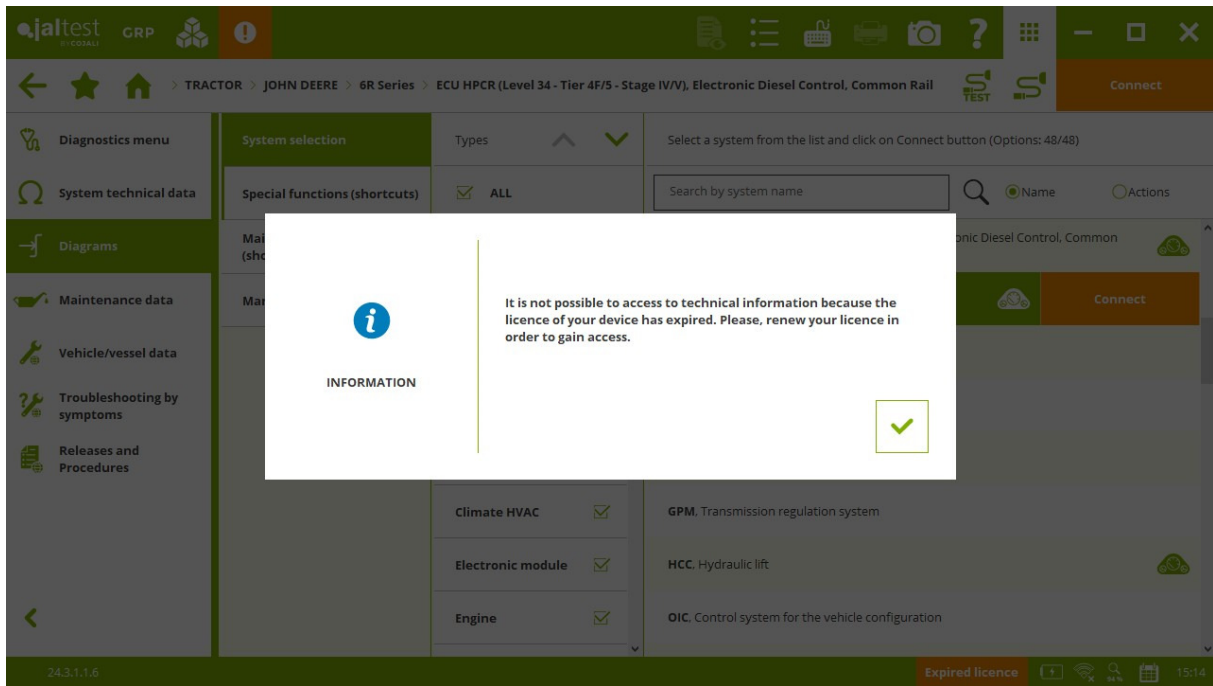


# OTHER FUNCTIONALITIES

- Removal of expert mode management by code. Therefore, from this version, there will be no code to enable the expert mode, it is only necessary to accept the terms and conditions of use. Jaltest Diagnostics will continue to inform the users in all advanced actions under expert mode so that they can take the necessary precautions. On the other hand, for enterprises where expert mode code would be useful, the creation of user roles from GRP is recommended in order to have different levels of access.



- Improved representation of measurements in diagnostics reports.
- To avoid excessive number of clicks when accessing a system, connection instructions are no longer displayed. If more information is required, it is necessary to go to the connection information button to access connection instructions on which cable to use.
- The technical information buttons are not disabled when the licence expires, however, access is not allowed.



- Improved management of licences and subscribed products. From this moment on, the Jaltest licence menu displays a breakdown of the status and expiry date of each subscribed module.

Take into account that this document is only a summary of the most relevant information of this new version. For further information, please visit Jaltest Report.

# BRANDS AND MODELS

---

Some of the new models and brands in Jaltest are listed below.

## TRACTOR

### CASE- IH

Quantum V/N/F/CL Series, engine: Tier 5/Stage V

Optum AFS Series, engine: Tier 5/Stage V

Puma AFS Series - CVT, engine: Tier 5/Stage V

### GOLDONI

T80, engine: Interim Tier 4/Stage IIIB

### LANDINI

5HC Series, engine Tier 5/Stage V

6RS Series, engine: Tier 5/Stage V

### MASSEY FERGUSON

6700 S Series, engine: Tier 5/Stage V

7700 S Series, engine: Tier 5/Stage V

### NEW HOLLAND

TK4 V/M/N/F Series, engine: Tier 5/Stage V

T7 PLM Series - Power Command, engine: Tier 5/Stage V

### STEYR

Absolut S-Fleet Series, engine: Tier 5/Stage V

Terrus S-Fleet Series, engine: Tier 5/Stage V

## HARVEST EQUIPMENT

### CLAAS

Jaguar Series (499)

### VALTRA

BC 4800

BC 5800

BC 7800

BC 8800

## SELF-PROPELLED AND TRAILING IMPLEMENT

This version includes two new brands of self-propelled and trailing implements:  
**CAFFINI** and **TRIOLIET**.

### VALTRA

BS 2517H

BS 3335H

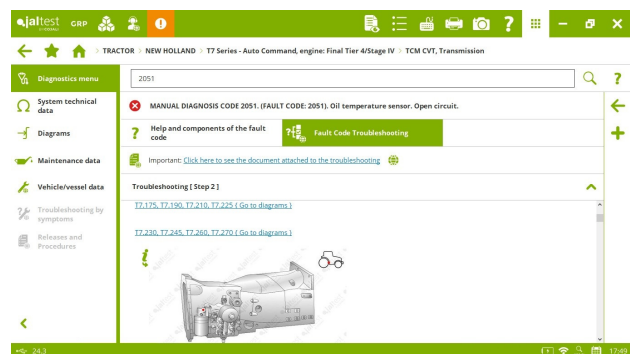
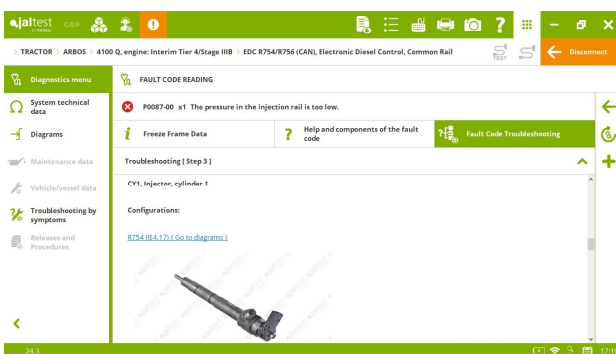
R530

# DIAGNOSTICS AND SYSTEMS

The technical information and troubleshooting guides by symptom and by the most common fault codes have continued to be extended in the workshop thanks to the communication channels with clients such as the technical support offered by the project, training, **Jaltest Feedback** and “**Product improvement**” option, which can be accepted during the installation of the program and at any time from the Configuration menu.

As an example, there are new fault code troubleshooting guides in the **VM EDC R754/R756** engine control system, present in models of **ARBOS**, **GOLDONI** or **NEW HOLLAND** tractor brands, among others.

These guides have also been added in the **HCU** hydraulic system, in the **ACM** armrest control system and in the **TCM CVT** transmission in models of **CNH** group.



It is important to note new fault code troubleshooting guides in the **CATERPILLAR C-9.3** engine control system present in brand models of tractor, harvest equipment and self-propelled and trailing implements, such as **CHALLENGER**, **CLAAS**, **ROGATOR** or **TERRAGATOR**, among others.

Lastly, new fault code troubleshooting guides in the **TRI** transmission from **CLASS** brand.

## TRACTOR

Extended manual diagnostics in several models of different brands such as **ARBOS**, **BASAK**, **JOHN DEERE**, **KUBOTA** or **MASSEY FERGUSON**, among others.

### ARBOS

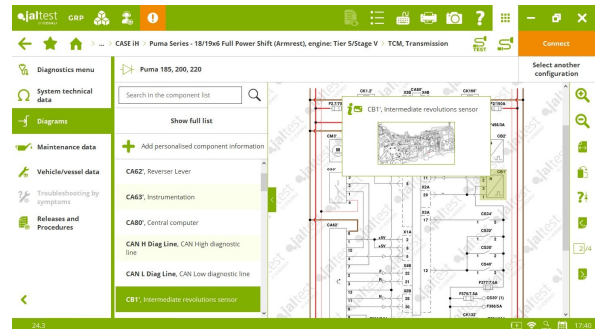
⊕ **DSB** instrument cluster in several brand models.

**DOOSAN DM02** engine control system, injector coding, high-pressure fuel circuit check, exhaust gas aftertreatment system check and oil change counter reset for **3065, Tier 5/Stage V engine** and **3075 models, Tier 5/Stage V engine**.

## CASE IH

⊕ **FHC** hydraulic system in **Maxxum Series - CVT models, engine: Tier 5/Stage V** and **Optum Series, engine: Final Tier 4/Stage IV**, among others.

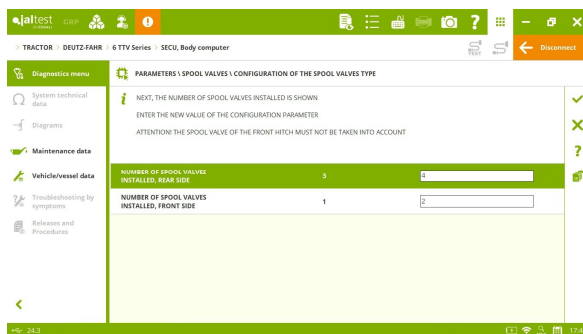
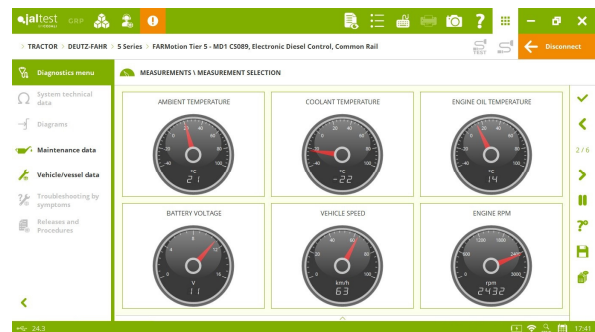
New wiring diagram configurations in the **TCM** transmission of the **Puma Series - 18/19x6 Full Power Shift (Armrest) model, Tier 5/Stage V engine** and in the **DEC** transmission of **Maxxum Series - DCT models, engine: Tier 5/Stage V** and **Vestrum Series - Semi Power Shift, engine: Tier 5/Stage V**.



## DEUTZ-FAHR

⊕ **SECU** central computer in the **6W Series** model.

⊕ **DEUTZ FARMotion Tier 5 - MD1 CS089** engine control system in **5 Series, 5 G Series** and **6 C Series** models, among others.



**SECU** central computer, configuration functions of the spool valve parameters for **6C Series, 6 TTV Series, 7 Series, 8 TTV Series** and **9 Series** models, among others.

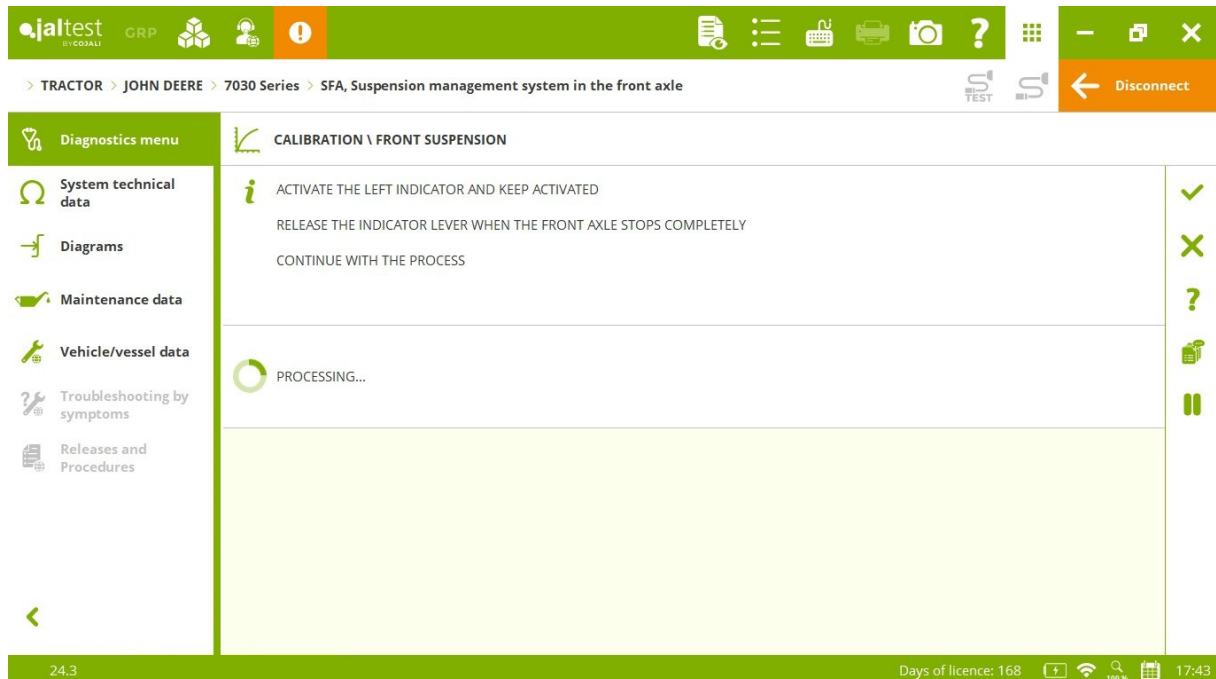
## GOLDONI

New wiring diagram configurations in the **VM EDC R754/R756** engine control system in **Q90 models, engine: Interim Tier 4/Stage IIIB** and **S110 GT, engine: Interim Tier 4/Stage IIIB**, among others.

## JOHN DEERE

- ⊕ **SCO** hydraulic system and **XMC** steering control system in the **7R Series** model.
- ⊕ **ATC** climate control in the **8020 Series** model.

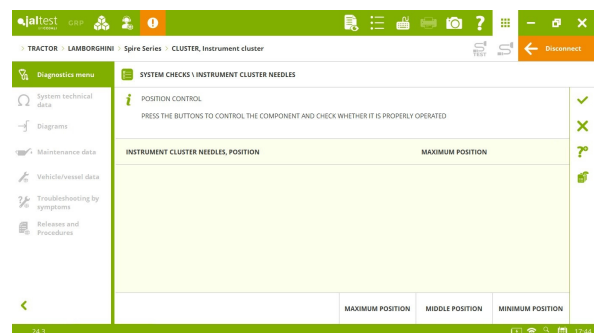
**SFA** suspension, front suspension calibration in the **7030 Series** model.



New wiring diagram configurations in the **TRAX** transmission in the **5G Series** model.

## LAMBORGHINI

**CLUSTER** instrument cluster, checks of the instrument cluster needles, the warning lamp state and the LCD state in **Spire Series**, **Sprint Series**, **EGO Series** and **RF Series** models, among others.



## LANDINI

**EMR5 EDC MD1** (on SAE J1939) engine control system, maintenance reset for the ash content correction in the Diesel Particulate Filter.



## MASSEY FERGUSON

⊕ **AUTOTRONIC 5 - Dyna 6** transmission in **6700 S Series** models, **engine: Tier 5/Stage V** and **7700 S Series, engine: Tier 5/Stage V**.

The screenshot shows the 'PARAMETERS \ MODIFY PARAMETERS' screen. The breadcrumb trail is: TRACTOR > MASSEY FERGUSON > 6700 S Series, engine: Tier 5/Stage V > AUTOTRONIC 5 - Dyna 6, Transmission. The interface includes a 'Disconnect' button and a 'Diagnostics menu' on the left with options like System technical data, Diagrams, Maintenance data, Vehicle/vessel data, Troubleshooting by symptoms, and Releases and Procedures.

Parameter ID	Description	Current Value	Available Values
(B)	TRACTION, AXLE CONFIGURATION	NOT AVAILABLE	(3) 4WD (ALL WHEEL DRIVE)
(C)	TYPE OF POWERSHUTTLE MODULE CONTROL SOLENOID VALVE	NOT AVAILABLE	(2) EVP3265
(D)	PROPORTIONAL GROUND SPEED POWER TAKE-OFF	(0) MECHANIC	(0) MECHANIC
(E)	MAXIMUM SPEED OF THE VEHICLE	(4) 50 km/h	(4) 50 km/h
(H)	POWER TAKE-OFF CONFIGURATION	(0) MECHANIC / 1000 E: NOT INSTALLED	(3) THREE-SPEED POWER TAKE...
(J)	SUPERCREEP GEAR	(2) TRACTORS WITH SUPERCREEP TRANSMISSION (MINIMUM SPEED: 0,1 km/h)	(2) TRACTORS WITH SUPERCREEP...
(K)	PARKING LOCK	(1) INSTALLED	(1) INSTALLED

**SRC14-34** central computer, maintenance reset in **6700 S, 7700 S** and **8700 S Series** models.

The screenshot shows the 'MAINTENANCE \ MAINTENANCE RESET' screen. The breadcrumb trail is: TRACTOR > MASSEY FERGUSON > 7700 S Series, engine: Tier 5/Stage V > SRC14-34, Body computer. The interface includes a 'Disconnect' button and a 'Diagnostics menu' on the left.

Parameter	Value
HOURS OF SERVICE, MAINTENANCE INTERVAL	500 h
ENGINE OPERATION HOURS	1527 h

## NEW HOLLAND

- ⊕ **FEHR** hydraulic system in **T7 Series - 18/19x6 Power Command (Armrest)** models.
- ⊕ **CAT4** electronic module in the **T4 V/N/F/LP Series** model, **engine: Tier 5/Stage V**.

**FPT EDC MDI CE101** engine control system, technical data in new engine types for several models such as **T5 Series - Auto Command, engine: Tier 5/Stage V**, **T6 Series - 16/17x16, engine: Tier 5/Stage V** and **T8 Genesis Series - Full Power Shift, engine: Tier 5/Stage V**, among others.

## SAME

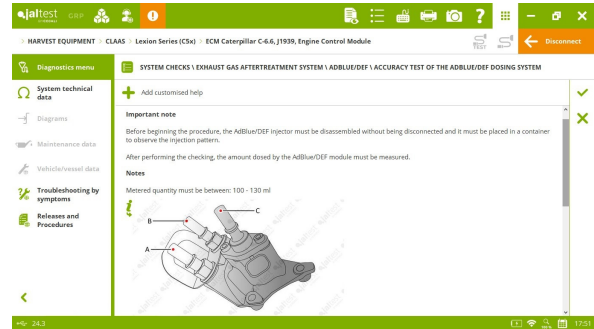
⊕ **MVCU** central computer for the **Virtus Series** model.

**SECU** central computer, manual accelerator calibration in **Virtus Series** and **Frutteto CVT Series** models, among others.

# HARVEST EQUIPMENT

## CLAAS

**CATERPILLAR C-4.4 / C-6.6, J1939** engine system, AdBlue/DEF dosing check in **Lexion Series C5x, Avero Series 561** and **Dominator Series** models, among others.

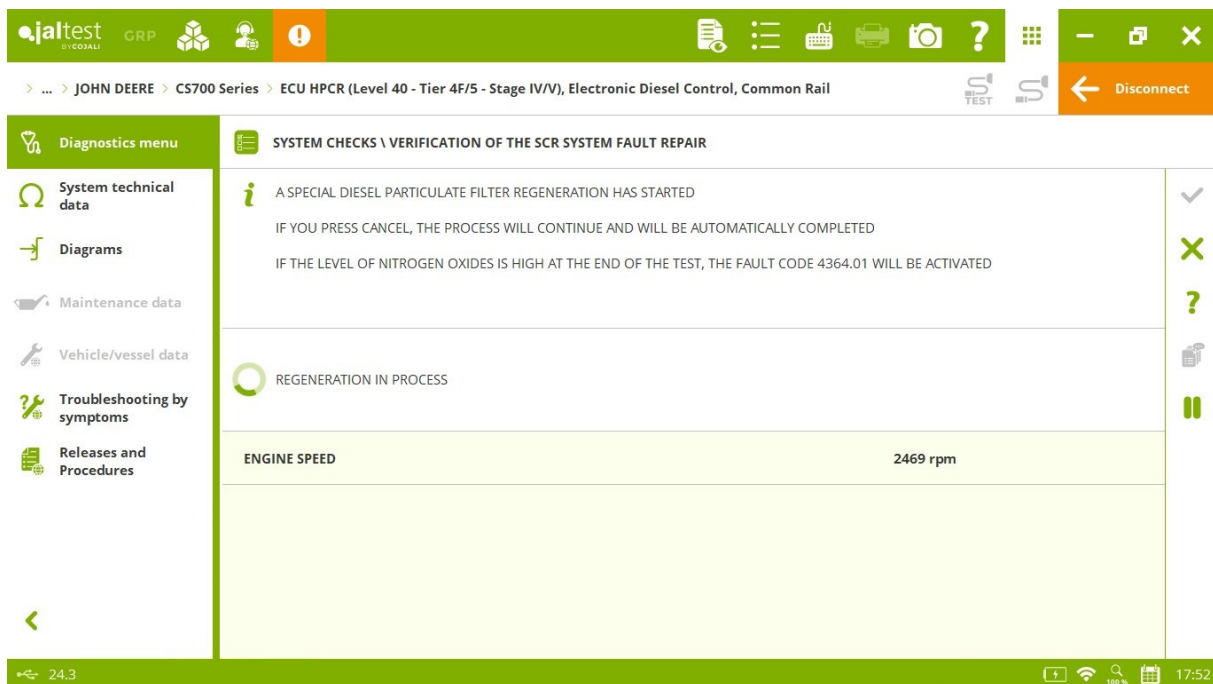


## FENDT

New wiring diagram configurations in the **SISU EEM2 - VP30/VP44** engine control system in the **C Series** model.

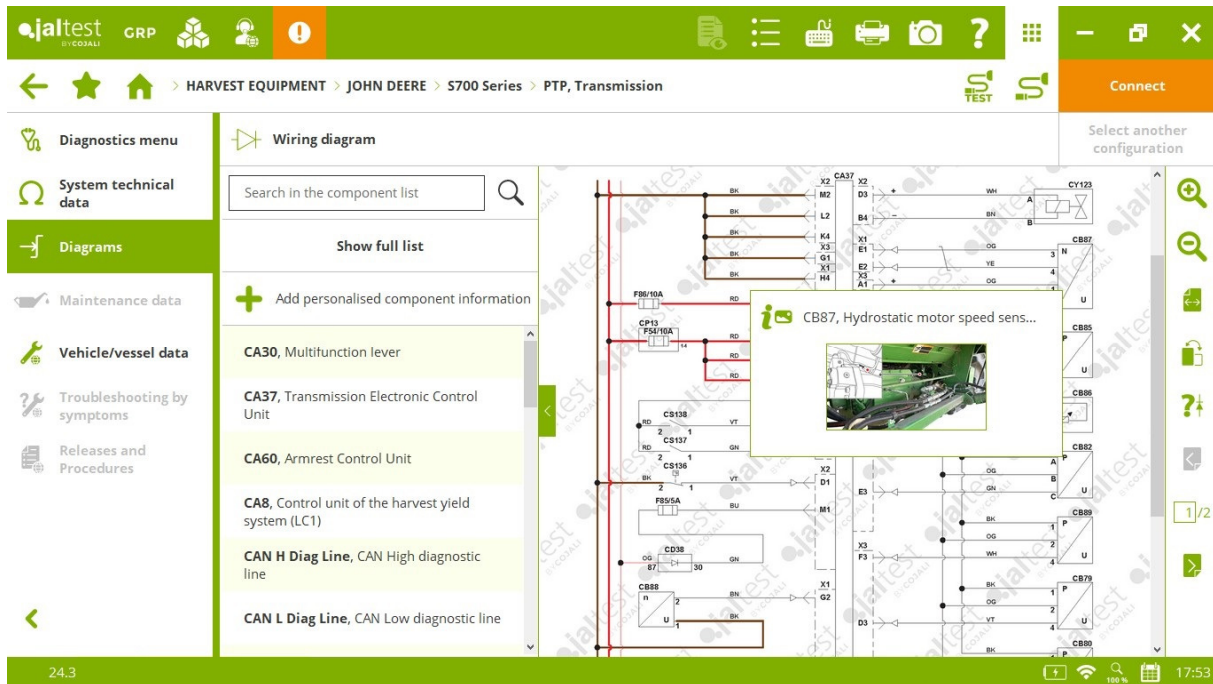
## JOHN DEERE

**JOHN DEERE Level 40** engine control system, verification check of the SCR system fault repair in **900 Series, CS700 Series** and **X9 Series** models, among others.



⊕ **LC1, LC2** and **RCU** harvest systems in **W500/W600 Series** models.

New wiring diagram configurations in the **PTP** transmission in **S500, S600** and **S700 Series** models.



## SELF-PROPELLED AND TRAILING IMPLEMENT

### HOLMER

New wiring diagram configurations in the **ACM** exhaust gas aftertreatment system in the **Terra Variant 650** model.

### MONCHIERO

**EDC YDECO** engine control system from **YANMAR**, operation data, activations and system checks.