



 **jaltest**
MHE
MATERIAL HANDLING

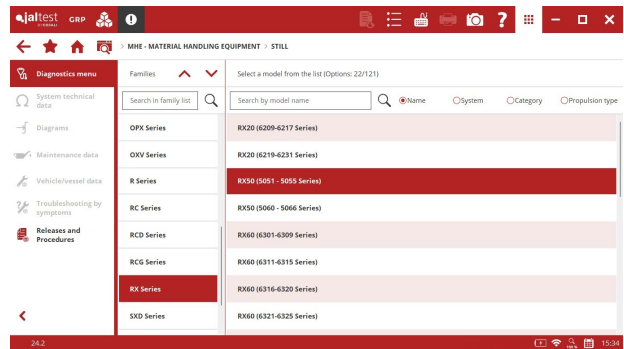
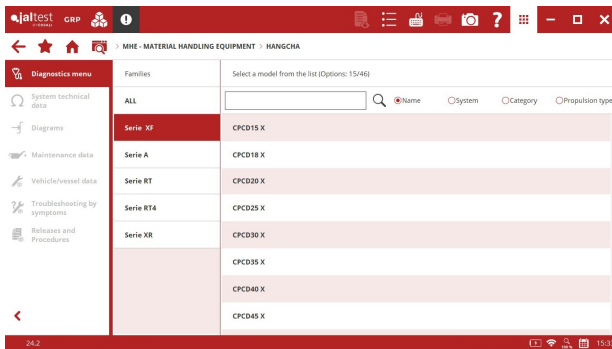
INNOVATIONS 24.2

Take into account that this document is only a summary of the most relevant information of this new version. For further information, please visit Jaltest Report.

BRANDS AND MODELS

This version includes **EP**, **FENWICK** and **TAILIFT** brands.

In addition, the number of models in the following brands has increased: **BT** (Staxio Series electric stacker family), **HANGCHA** (XF Series forklift family), **JUNGHEINRICH**, **LIUGONG** (CPCD Series forklift family), **STILL** (RX Series forklift family), **TOYOTA** and **XCMG** (FD Series forklift family) in which models of different types of vehicles, both electric and internal combustion engines, have been added.

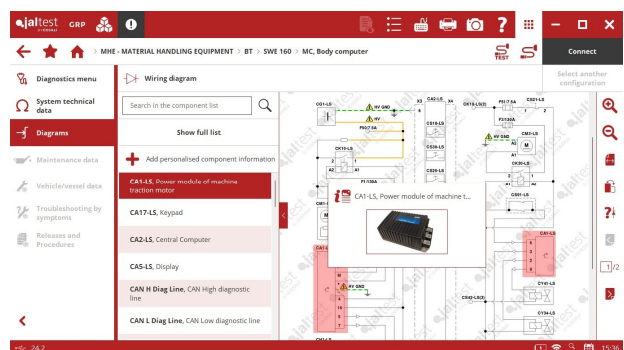


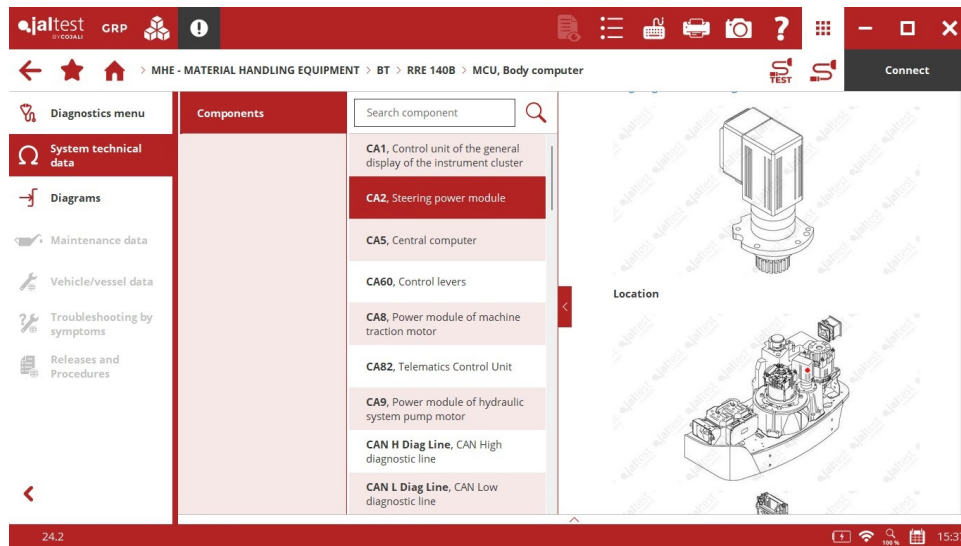
DIAGNOSTICS AND SYSTEMS

BT

Wiring diagram configurations of the **MC** central computer for models of **Levio Series** and **Staxio Series** families.

Wiring diagram configurations of the **MCU** central computer for models of the **Reflex Serie B** family.



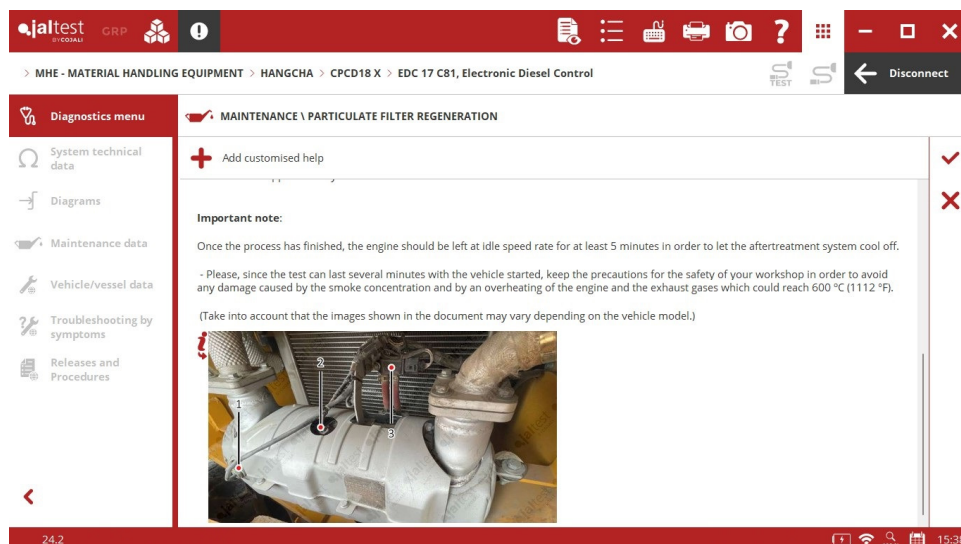


HANGCHA

- ⊕ **EDC** engine control system in forklifts of internal combustion that includes the Diesel Particulate Filter regeneration.

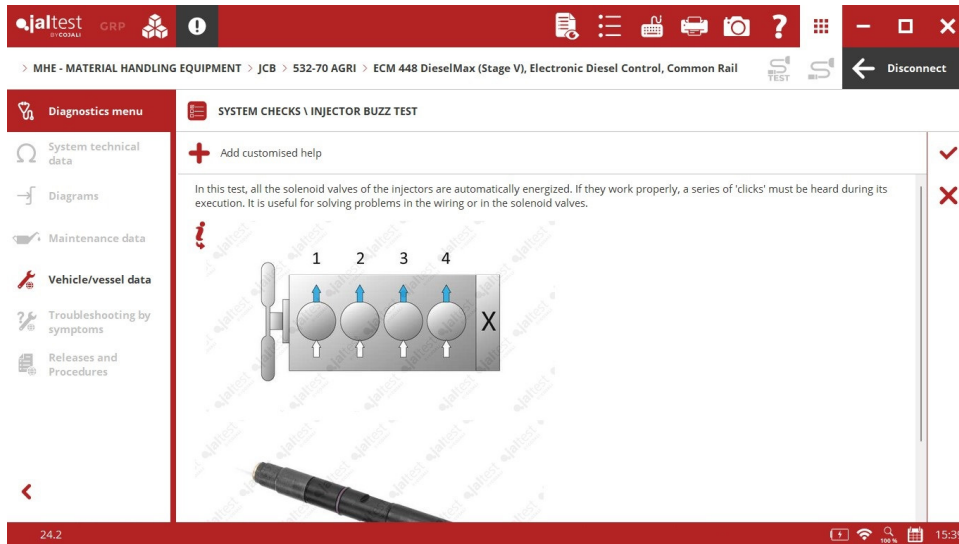
JCB

- ⊕ **JCB Stage V 448 ECM** engine control system for telescopic handlers of internal combustion that includes checks, parameters and maintenance services.



JLG

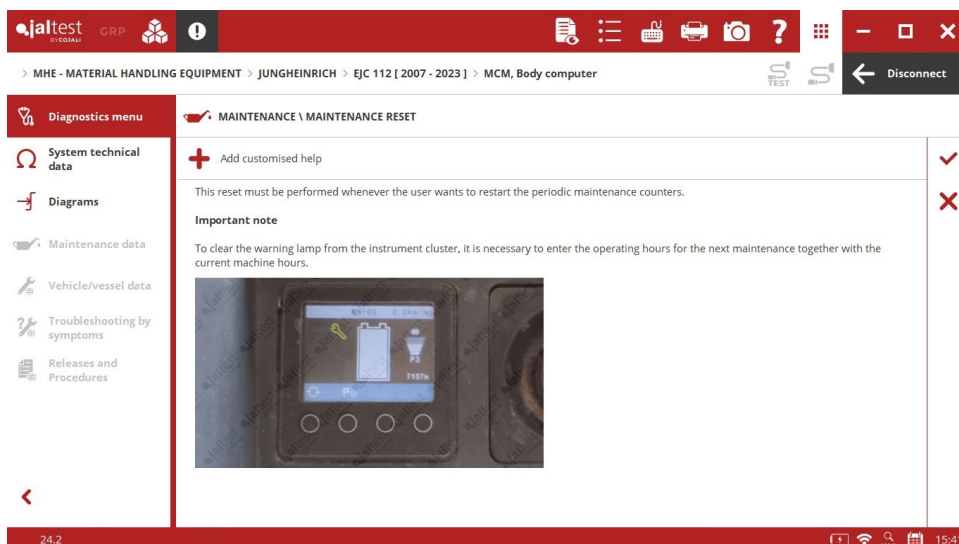
DEUTZ EMR5 – EDC MD1 engine control system for lift platforms, checks.



JUNGHEINRICH

⊕ **MCM** central computer for retractable forklifts.

MCM central computer for stackers in models from 2018 onwards, maintenance reset in **EJC Series**, **ERC Series** and **ERD Series** families.



In addition, new wiring diagram configurations available for pallet jacks in **EJE Series** families for models from 2018 onwards.

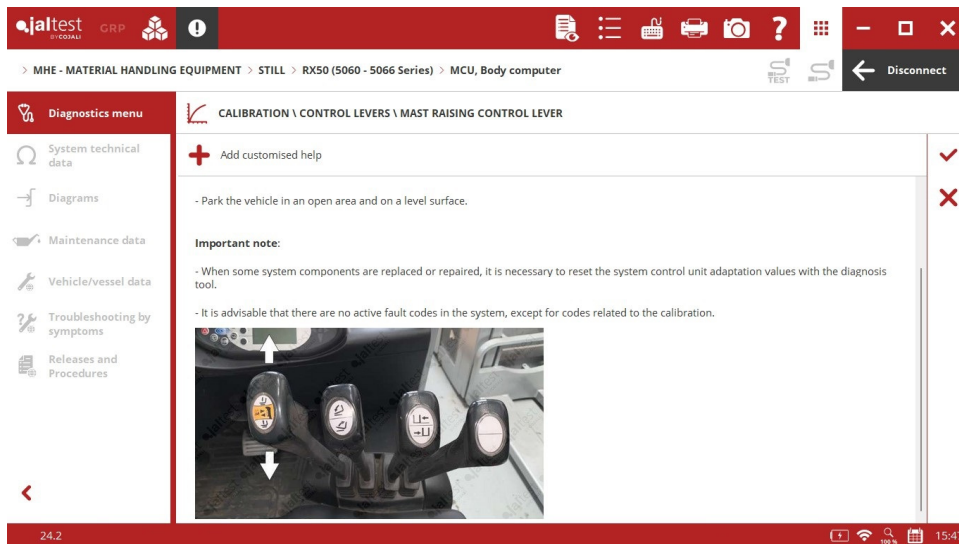
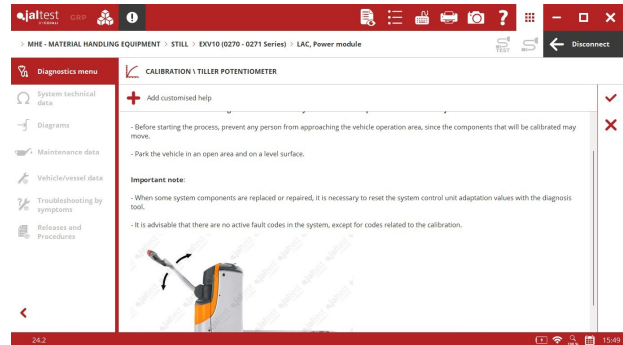
STILL

⊕ **MCU** central computer for first generation **Rx50** electric forklifts.

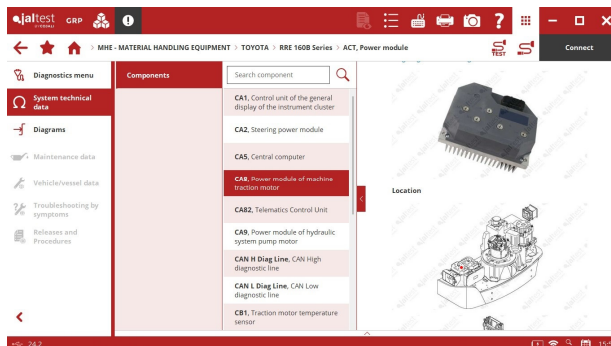
VR servo hydraulic control system for electric forklifts, checks and parameters.

LAC power module for pallet jacks and stackers, actuators, parameters, maintenance services and calibrations.

MCU central computer for second generation **Rx50** electric forklifts, checks, parameters and calibrations.



TOYOTA



Wiring diagram configurations in **ACT** and **ACH** power modules for models of the **Reflex Serie B** family.