



INNOVATIONS 24.2

Take into account that this document is only a summary of the most relevant information of this new version. For further information, please visit Jaltest Report.

BRANDS AND MODELS

TRACTOR

This version includes a new tractor brand: **HATTAT**. Some of the new models in Jaltest are listed below.

BASAK

5075 / 5095 / 5105 / 5115

HATTAT

200 Series

300 Series

A Series

B Series

C Series

T Series

HÜRLIMANN

XL.K Series

KUBOTA

M6U Series

M5002 Series

M6002 Series

NEW HOLLAND

TS Series

HARVEST EQUIPMENT

NEW HOLLAND

CR Series, engine: Tier 5/Stage V

SELF-PROPELLED AND TRAILING IMPLEMENT

This version includes a new brand of self-propelled and trailing implements: **SGARIBOLDI**.

Some of the new models in Jaltest are listed below.

HOLMER

Terra Variant 650

SGARIBOLDI

Combi Series

Grizzly Series

Gulliver Series

Koala Series

MAV Series

Titanium Series

DIAGNOSTICS AND SYSTEMS

Overall, there are new technical information and troubleshooting guides (improved to be displayed in **SMART guide** format to reduce repair time and improve decision making) by symptoms and of the most common fault codes in the workshop thanks to the communication channels with clients such as the technical support offered by the project, training, Jaltest Feedback and “Product improvement” option. We encourage you to use this functionality to further extend the coverage in future versions according to your needs.

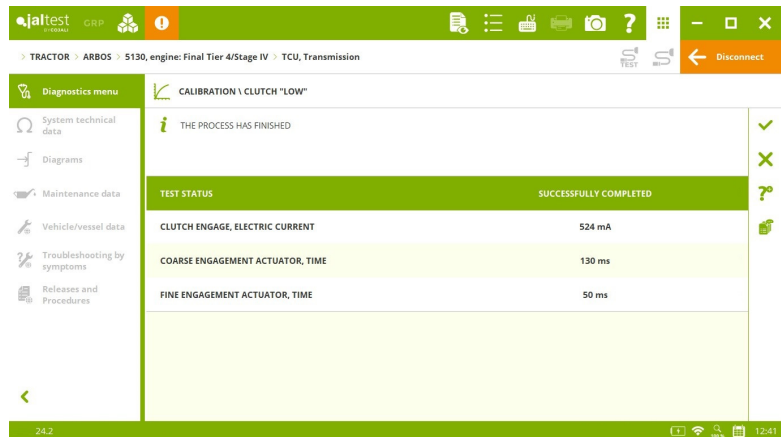
In addition, new repair SMART guides by fault code in the **EDC MD1 CS069** engine control system of the **FPT** brand, present in several models of tractor and implement brands such as **CNH, JOHN DEERE, LANDINI, MCCORMICK** or **PELLENC**, among others.

TRACTOR

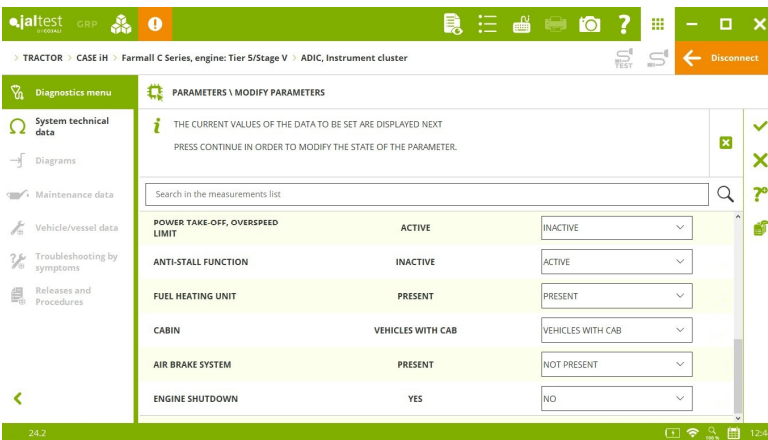
Overall, extended manual diagnostics coverage in several models of different brands such as **CASE IH**, **JOHN DEERE** or **NEW HOLLAND**, among others.

ARBOS

TCU transmission, actuations and calibrations for **5100**, **5115**, **5130**, **7220**, **7240** and **7260** models.



CASE IH



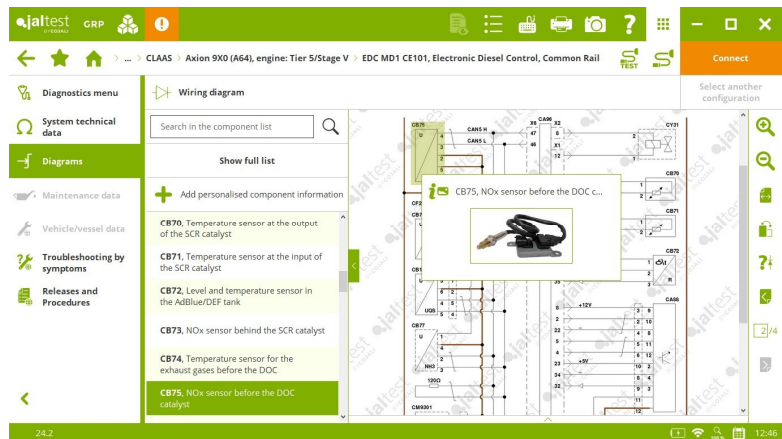
⊕ **Powertrain** power take-off and **SFA** suspension control system in the **Maxxum MX Series** model.

ADIC instrument cluster system, parameter configuration for the **Farmall C Series** model, **engine: Tier 5/Stage V**.

FPT EDC MD1 CE101 engine control system, new engine types for **Puma Series - 18/19x6 Full Power Shift (Armrest)** models, **engine: Tier 5/Stage V**, **Puma Series - 18/19x6 Semi Power Shift**, **engine: Tier 5/Stage V**, among others.

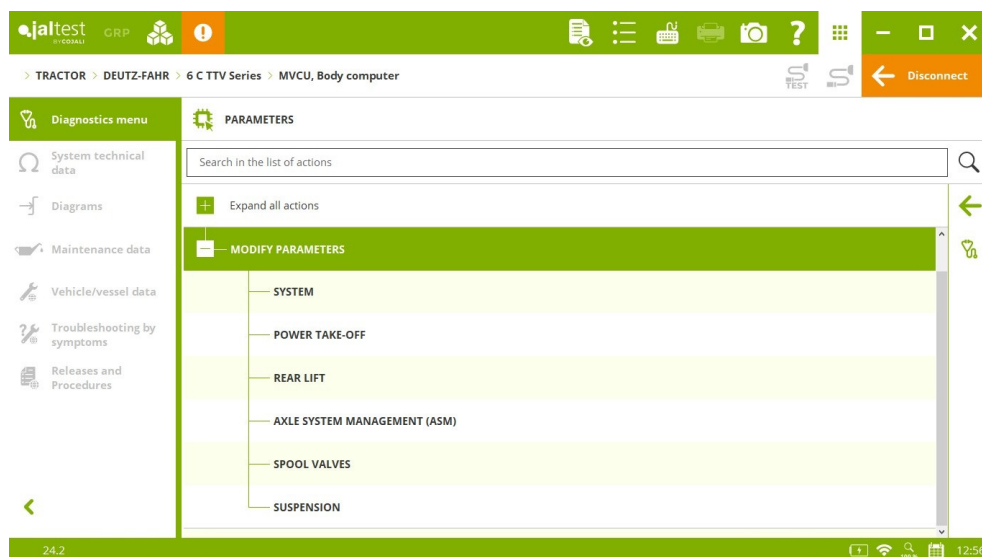
CLAAS

Wiring diagram configurations in the **FPT EDC MD1 CE101** engine control system for the **Axion 9X0 (A64)** model, **engine: Tier 5/Stage V**.



DEUTZ-FAHR

MVCU central computer, parameter configuration of the power take-off, the rear lift and the axle management system (ASM) for **5G Series, 6C** and **6C TTV Series** models.

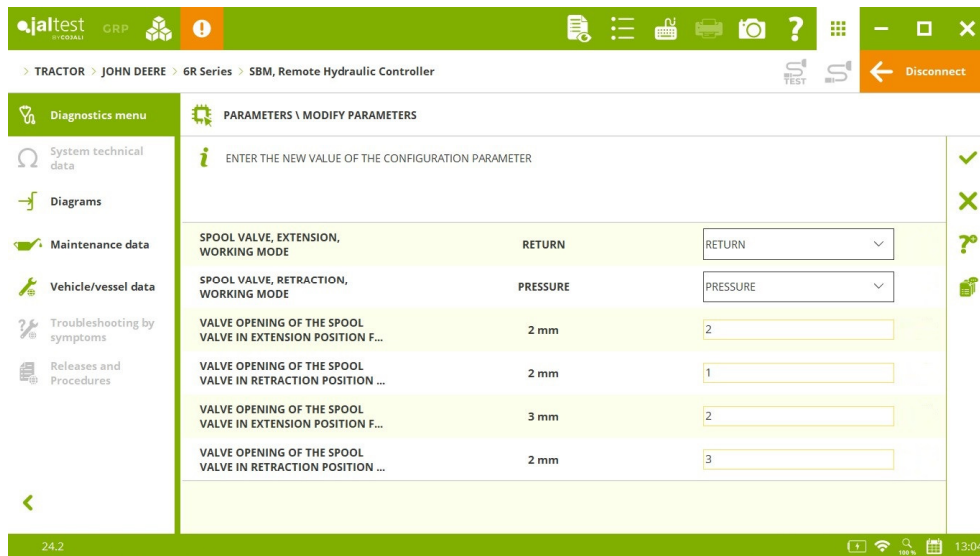


FENDT

MAN EDC 17 CV42 engine control system, inducement counter reset and fault code clearance of the exhaust gas aftertreatment system for **1000 Vario Series** models, **engine: Final Tier 4/Stage IV, 1100 Vario MT Series, engine: Final Tier 4/Stage IV** and **1100 Vario MT Series, engine: Tier 5/Stage V**.

JOHN DEERE

- ⊕ **SBJ, SBK, SBL, SBM** and **SBN** hydraulic systems for the **6R Series** model that include functions of parameter configuration.
- ⊕ **AIC (MY22)** armrest control system for **7R** and **9R Series** models.
- ⊕ **ATC (MY22)** climate control system for **7R** and **9R Series** models.

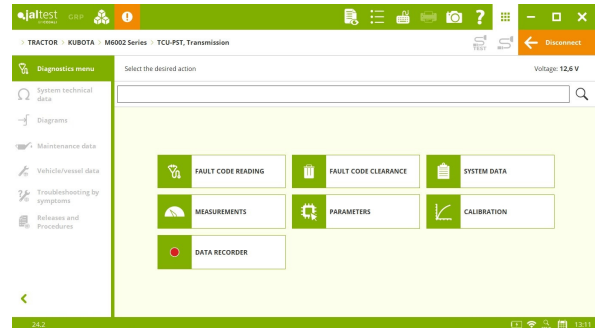


HCU hydraulic system, rear lift calibration for the **5003 E Series** model.

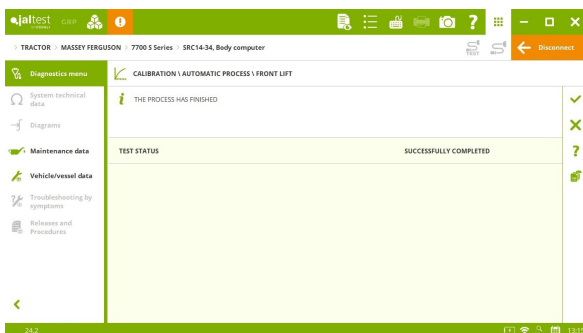
SFA suspension system, technical release of the front suspension calibration for the **5R Series** model.

KUBOTA

- ⊕ **ARU** armrest control system for the **M6002 Series** model that includes the multifunction lever calibration.
- ⊕ **TCU-PST** transmission for the **M6002 Series** model that includes technical releases of the calibrations of the accelerator pedal, the main clutch and the clutch pressure control solenoid valve.



MASSEY FERGUSON

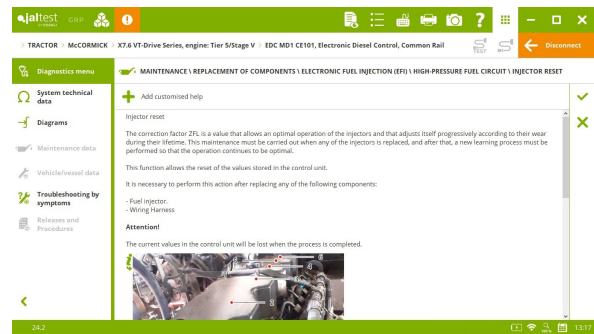


Autotronic 5 – TECU system, cab suspension calibration for **6600 and 7600 Series** models.

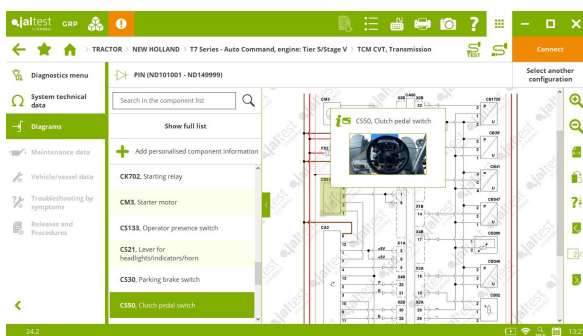
SRC14-34 central computer, calibrations of the “senstronic” torque sensor and the front lift for **6700 S, 7700 S and 8700 S Series** models.

McCORMICK

FPT **EDC MD1 CE101** engine control system, injector reset for **X7.6 P6-Drive Series** models, engine: **Tier 5/Stage V** and **X7.6 VT-Drive Series**, engine: **Tier 5/Stage V**.



NEW HOLLAND



+ **EDC** hydraulic system for the **TS Series** model.

+ **24x24** and **16x16** transmission systems for the **TS Series** model.

Wiring diagram configurations of the **TCM/CVT** transmission for **T6 Series - Auto Command Tier 5/Stage V** and **T7 Series - Auto Command Tier 5/Stage V** models.

FPT **EDC MD1 CE101** engine control system, new engine types for **T7 Series - 18/19x6 Power Command (Armrest)** models, engine: **Tier 5/Stage V**, **T7 Series - 18/19x6 Range Command (Armrest)**, engine: **Tier 5/Stage V** and **T7 Series - Auto Command**, engine: **Tier 5/Stage V**.

STEYR

Wiring diagram configurations in the **4WD** drive system and the **ADIC** instrument cluster for the **Profi 4115-6145 - CVT Final Tier 4/Stage IV TMR** model.

HARVEST EQUIPMENT

CASE IH

Wiring diagram configurations in the **SISU EDC 7 UC31** engine control system for the **Axial-Flow 7010/8010/9010 Series** model.

FENDT

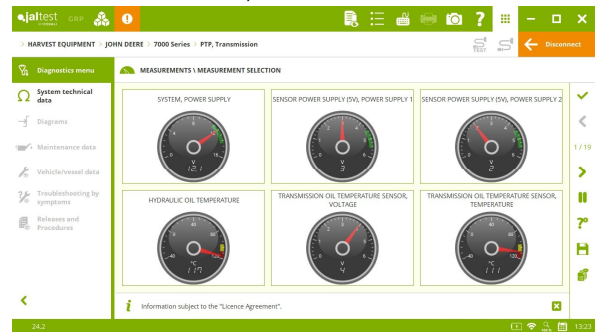
MAN EDC 17 Master/Slave CV42 engine control system, checks of the AdBlue/DEF pump, the AdBlue/DEF pressure sensor and the temperature sensor of the oxidation catalyst for the **IDEAL Series** model.

JOHN DEERE

- ⊕ **PTP** transmission in the **7000 Series** model.
- ⊕ **CAB** electronic module and **HMM** harvest system in **T500** and **T600 Series** models.

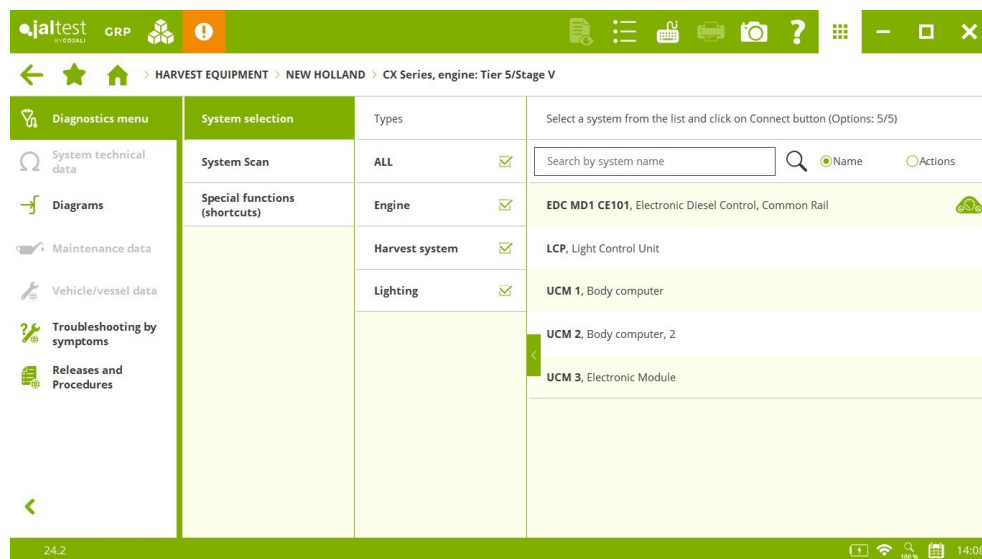
Wiring diagram configurations in the **PTP** transmission for **S500, S600** and **S700 Series** models.

Wiring diagram configurations in the **ECU EDC Level 33** engine control system for **T500** and **T600 Series** models, and in **ECU EDC Level 9** and **ECU EDC Level 22** engine control systems for the **7000 Series** model.



NEW HOLLAND

- ⊕ **LCP** lighting system in **7000 Series** models, **engine: Tier 5/Stage V, 8000 Series, engine: Tier 5/Stage V, 9000 Series, engine: Tier 5/Stage V, CR Series, engine: Tier 5/Stage V** and **CX Series, engine: Tier 5/Stage V**.



SELF-PROPELLED AND TRAILING IMPLEMENT

JOHN DEERE

New wiring diagrams in the **EDC Yanmar** engine control system in **1575, 1580, 8700A, 9009A** and **Z997R** models, among others.

PELLENC

FPT EDC MD1 CS069 engine control system, actuations of the throttle valve, the EGR valve, the AdBlue/DEF system heaters and the warning lamps for the **Buggy Maxi 5000 S** model.

